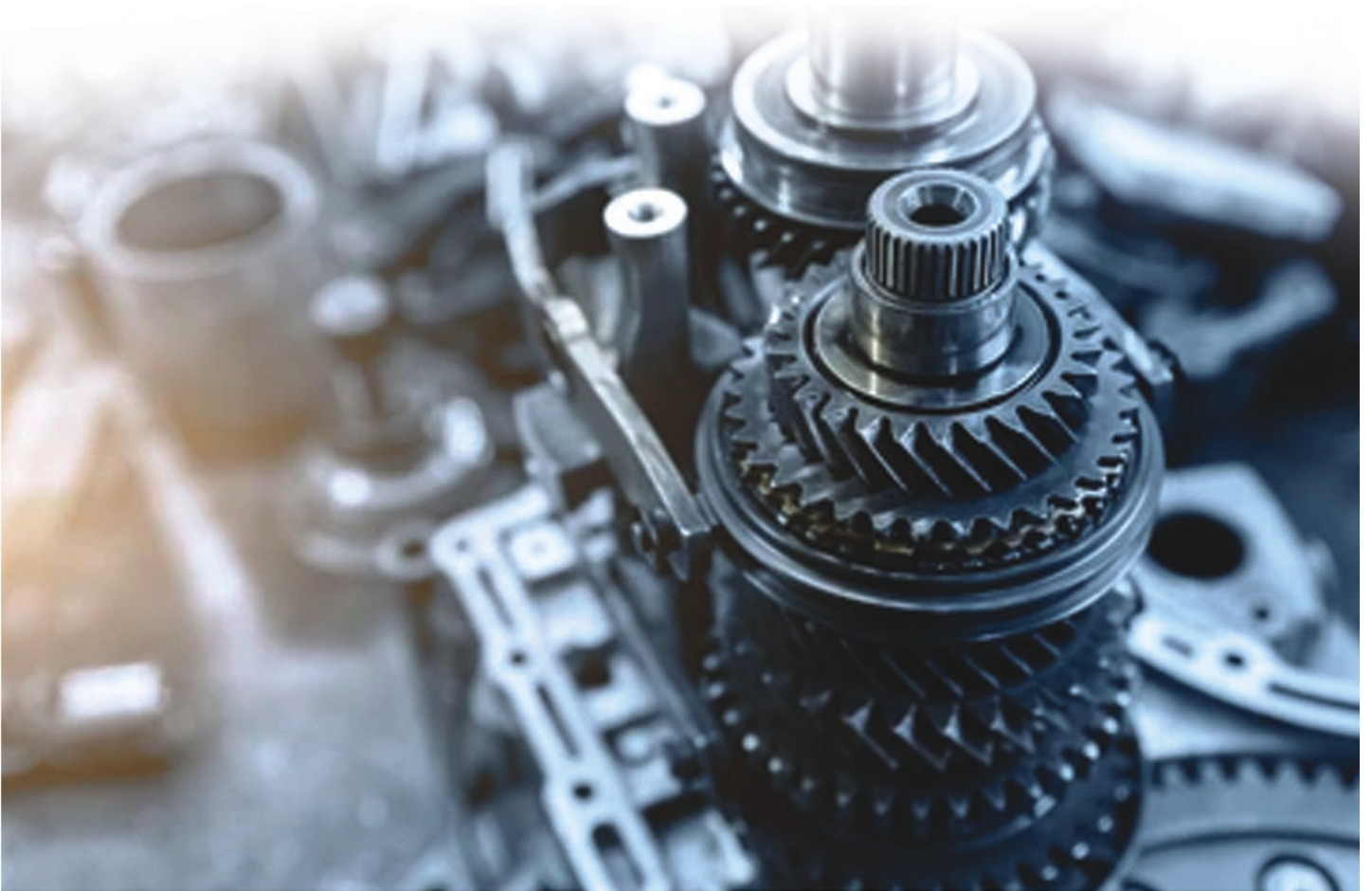


**RE** Rajendra Enterprises

**RTC** Rajendra Trading Company



Add: Gat No. – 189, Behind Jyotiba Temple, Jyotiba Nagar, Talawade,  
Pune – 411062. Maharashtra Contact :- 9225522664 / 7304240560 / 9765272625.

Email - [rajendra\\_enterprises78@rediffmail.com](mailto:rajendra_enterprises78@rediffmail.com) / [rajendratc.alpesh@gmail.com](mailto:rajendratc.alpesh@gmail.com)

Website - [www.rajendramotorspune.com](http://www.rajendramotorspune.com)

Authorised Dealer:  **CG Power and Industrial Solutions Ltd.**



HT & LT Motors



Crane Duty Motor



Brake Motors



Flame Proof Motor



Vfd's



Single Phase Motor



Pump & Stator



Monobloc Pump

Authorised Dealer:  **HAVELLS** Havells India Ltd.



LT Motors



Brake Motor



Crane Duty Motor



Single Phase Motor



Pedestal Fan



Wall Mounting Fan



Exhaust Fan

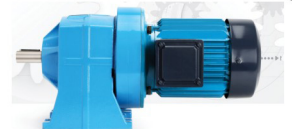


Wires & Cables

Authorised Dealer:



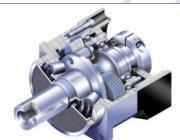
Helical Inline Gear Box



Authorised Dealer:



Precision Planetary Gear Box



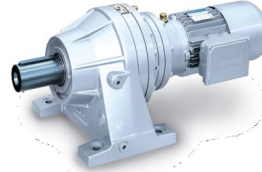
Also Dealing In:



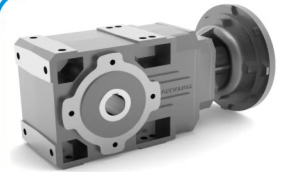
Helical Inline Gearbox



Worm Gearbox



Planetary Gearbox



Bevel Helical Gearbox

Also Dealing In:



**PREMIUM**  
Your addition in transmission

Helical Inline Gearbox



Worm Gearbox



Also Dealing In:



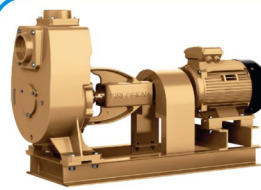
Enriching Lives



Monobloc Pump



Open Well Submersible Pump



Coupled Pump Set



Mud Pump



Sewage Submersible Pump



Fenner<sup>®</sup> BC 08 Coupling

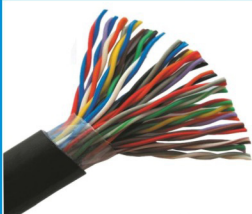


Fenner<sup>®</sup> Pully with Bush

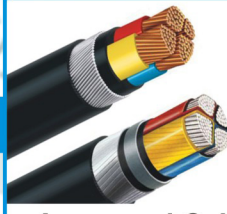
JK Fenner



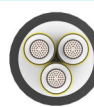
Also Dealing In:



Multicore Cables



Armoured Cables



HT Cable



LT Cable

**Rajendra Enterprises** was established in the year 2004 with great technical ideas to serve not only the Mechanical Industry but also to cover various Industries through our wide product range. In Industrial Motors, Industrial Gearbox, Pumps, Industrial Wires & Cables, Industrial Fans etc.

We concentrate on Quality & to the best satisfaction of our customers in all respect.

The aim of starting giving brands is to ensure ISI Standard Quality Product with strong technical support. We are using very high Quality Raw-Material which ensure its long durability.

