

Smart solutions.
Strong relationships.

FHP MOTORS



CG Power & Industrial Solutions Ltd.
(Formerly Crompton Greaves Ltd.)



COMPANY PROFILE

CG Power & Industrial Solutions Limited (Formerly Crompton Greaves Limited) is a part of the world-renowned Avantha Group ,India. CG was established in 1937 as Crompton Parkinson Works, a wholly-owned subsidiary of Crompton Parkinson.

The last seven decades of unparalleled growth have witnessed CG emerging as a leader in Electrical Generation, Transmission , Distribution and Utilization Products and diversify into electronics and automation.

The Company's operations involve manufacturing, marketing and turnkey projects, in clearly defined core business areas. Over the years CG has steadily developed into a professionally managed company.

Wholly dedicated to the most exacting standards of Quality, and Customer Service, consistently motivated by the need to ensure total product satisfaction, each division is self-reliant in its own activity of Research & Development, Manufacturing and Marketing. The division product groups offer a comprehensive and multifaceted product range nationally through a well equipped, well-knit countrywide distribution network. Structured into Strategic Business Units (SBUs) comprising synergistic groups of Responsibility Centers /Divisions, backed by an extensive marketing infrastructure and front line support services, with access to state-of-the-art global technology, CG is fully geared to meet the challenges of the future.

FHP PROFILE

We offer custom made motors to suit every existing and emerging application requirements in segments of domestic applications, farm equipments, medical and healthcare equipment, industrial and construction equipment.

Single Phase Motors are used in variety of applications in households and small industrial sectors, where three phase power supply is not available. Single Phase motors are classified based on the type of starting mechanism. Widely used starting mechanisms are Split Phase, Capacitor Start and Run, Capacitor Start Induction Run and Capacitor Start Capacitor Run. Depending upon the application load characteristics, mounting suitability and cooling mechanisms, we have single phase motors in various output powers, constructions and enclosures in the application categories given below:

Agriculture Implements:

Motors are available for Chaff Cutters, Hullers, Poultry Fans, Winnowing Fans, Milking Machines and Lawn Mowers etc

Industrial Equipments:

Motors are available for Air Compressors, Fuel Dispensers, Gem/Diamond Polishing, Coir making, Conveyors, Exhaust Fans, Vacuum Pumps, and Wood Working Machinery etc.

Medical & Healthcare:

Motors are available for Surgical Pumps, X Ray Machines, Humidifier/De-Humidifiers, Treadmill etc

Construction Equipments:

Motors are available for Hoist, High Mast Applications, Floor Polishing Machines, Floor Scrubbers, Concrete Mixers, and Needle Vibrators etc.

Domestic Appliances:

Motors are available for Washing machine, Air conditioners, Wet grinders, Air handling units, Domestic Grinders etc

INTRODUCTION TO SINGLE PHASE MOTORS

Working Principle

By the nature of the market for FHP Motors, the main demand is for single phase types. The most common of these are Split Phase, Capacitor Start Induction Run, Capacitor Start and Run, Capacitor Start Capacitor Run, and Shaded Pole.

In order to be self-starting, an electric motor must have a rotating field. The phase displacement in a 3-phase supply produces this, but a single phase motor requires an auxiliary (starting) winding designed to give a displacement similar to a 2-phase supply before the effect is produced. It can be achieved in various ways, each of which has produced a motor with particular characteristics as follows.

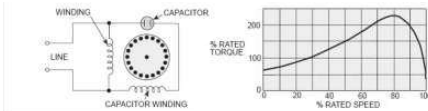
Split Phase Start, Induction Run (SP)

The starting winding uses fine wire and thus has a higher resistance. It is also arranged to have a low reactance. The current in the start winding thus leads that in the main winding and a rotating field is set up. The start winding works at a high current density and it must be switched out as soon as possible when the machine reaches about 75% speed. These motors are suitable for low inertia loads and infrequent starting. Starting current is relatively large and account should be taken of this, when installing, to avoid excessive voltage drop.



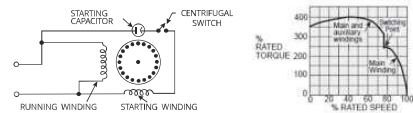
Capacitor Start and Run (PSC)

Capacitor run motors use a capacitor, permanently connected in series with one of the stator windings, to achieve a compromise between good starting torque and good running characteristics. This design is lower in cost than other type capacitor motors that incorporate capacitor switching systems. It achieves better running characteristics than a split phase motor



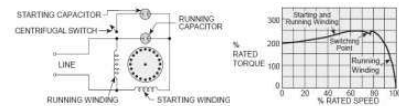
Capacitor Start Induction Run (CSIR)

A capacitor is inserted in series with the start winding to reduce the inductive reactance to a low or even negative value. The start winding current therefore leads the main windings current by almost 90°. A large a.c. electrolytic capacitor is used and, since this is short time rated, it must be switched out as soon as the motor has run up to about 75% speed. These motors are suitable for loads of higher inertia or more frequent starting than with the Split Phase Motors. Starting torque is improved and starting current reduced



Capacitor Start, Capacitor Run (CSCR)

A large electrolytic capacitor is used for starting but this is switched out when the machine runs up to speed and a smaller paper capacitor is left in circuit while the machine continues to operate. Thus the good starting performance of the capacitor start motor is combined with the good running performance of the capacitor start and run motor.



OPEN-CIRCUITING DEVICES

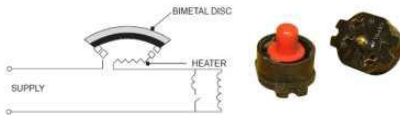
Split phase and all capacitor-start models must have some means of switching the starting circuit out once the motor has accelerated up. A centrifugal switch, a speed sensitive device, opens by the centrifugal action of weighted flyers, generally at 75-80% full load speed. Alternatively, a current relay is adopted. The operating coil is connected in series with the run winding and actuated as the current falls during the acceleration period, thus switching out the starting circuit. The centrifugal switch can also be used solely as a speed sensitive device for operation of external circuits.

CAPACITORS

There are electrolytic short-time rated capacitors used on capacitor-start models, usually mounted on the motor frame. Electrolytic capacitors might deteriorate when stored without use for long periods. They are normally reactivated by switching the motor on and off. Normally rated for 1.7% Duty Cycle and Temperature of 70 Deg C. Motor Run Capacitors are made up of Metalized Poly Propylene (MPP) and are continuously rated and temperature 85 Deg C.

EXTERNAL THERMAL OVERLOAD PROTECTOR (TOP)

This overload device is usually mounted in the motor end shield. It comprises a temperature sensitive, bimetal disc with a heater and snap - action switch contacts. It is connected in series with one of the main supply leads. The 'trigger' temperature of the bimetal disc is thus, a function of both the motor mains current, via the heater, and the interior temperature of the motor. The snap action of the bimetal disc is caused by reversal of the disc curvature. The bimetal characteristics offer both automatic and manual reset. If manual reset is required, the normal resetting temperature of the bimetal disc is arranged below that of the normal conditions. It will, therefore, only restart on manual resetting of the bimetal disc.



The TOP operates in the following critical overheating conditions:

- Overload
- Here the combination of the abnormally high supply current and rising winding temperature actuates the bimetal disc.
- Locked Rotor

The abnormally high locked rotor supply current, through the TOP heaters, actuates the bimetal disc much faster than if it were responding only to increasing winding temperature. The characteristics of the bimetal disc are selected according to the particular requirements of each motor. For example, to safeguard against the high starting current of a split phase motor the typical TOP would be designed to operate within five seconds from cold.

For the more favorable starting current characteristics of the capacitor-start motor, this period is increased to about twelve seconds. Starting current characteristics of capacitor-start-and-run motors are even more favorable, and because the capacitor is continuously rated and much less vulnerable, operating time for the TOP can be increased up to several minutes. Fitment of TOP is designed to limit

1. Initial peak temperatures under stalled motor conditions

Insulation Class	B	F
Peak Temperature	225°C	240°C

2. Under prolonged stalled conditions after the first hour will not exceed

Insulation Class	B	F
Peak Temperature	200°C	215°C
Average Temperature	175°C	190°C

3. Under overload conditions the following temperatures should not be exceeded

Insulation Class	B	F
Peak Temperature	165°C	180°C

EMBEDDED THERMAL OVERLOAD PROTECTORS

Small thermostat device, set to operate at 140 + 10°C and connected in series with the mains supply, are usually considered adequate protection on general purpose motors. These are inexpensive and auto-reset type. (Embedded inside the windings)



RELIABILITY

Each component goes through rigorous quality control at every stage of manufacture. With well-equipped material testing laboratories to back up the modern manufacturing process, the final product is a highly reliable motor.

Use of critical components (Capacitors, Winding Wires, Centrifugal Gears, OC Switches, Thermal Protectors etc) from the world's leading suppliers also enhances the reliability of our products and vendors are continuously evaluated for the component reliability and process compliance.

MOUNTING:

- Carefully align the motor and drive machine/equipment to avoid unnecessary stress and wear.
- Use flexible coupling for direct drives. Driving belts should be flexible and just tight enough to prevent belt slipping.
- Use proper locking arrangements for Fan Blades as applicable.

Note 1: Shaft fitments (e.g. Pulleys, couplings etc) should be bored to clearance fit dimensions ensuring a light hand push fit on the motor shaft; in no case the pulleys to be driven on the shaft.

Note 2: In case the application demands tighter fit of pulley onto the shaft, the opposite drive end of the shaft to be firmly supported while pressing pulley on to shaft.

CONNECTIONS:

- Check the voltage and frequency of the supply with that of Motor Nameplate Data.
- Connection diagram and Instructions for reversal of direction of rotation are supplied with each motor (if applicable). Conduit should not enter the motor terminal box for more than 8 mm.
- All the motors to be properly earthed/ grounded.
- Use proper gauge of wire for the motor supply cable and Ground/Earth of the motor. Follow all the electrical and general safety rules as applicable for the site of installation. (Law of the land)
- Make proper connections (Hi, Med, and Low) to 3 speed motors where switch is provided. The speed selector switch is marked with 1, 2, 3 terminals. Common wire is supplied with the switch/motor.
- Give the supply to "Common Blue" from motor and short lead "Blue" coming from the switch.

FHP MOTORS PRODUCT BASELINE DETAILS

Rated Voltage	50 Hz 220V, 415V (+/- 10%) 60 Hz 110V, 220V, 380V, 415V (+/- 3%)	
Frame Sizes	NEMA B42 to 215T IEC 56 to 132	
Construction Material	MS Rolled NEMA Frames Cast Iron IEC Frames Aluminum PDC IEC Frames	
Enclosures	Drip Proof IP 23 Drip Proof Fan Cooled IP 23 Totally Enclosed Fan Cooled IP44 (IP55 Optional) Totally Enclosed Air Over IP44 (IP55 Optional) Completely Open - Application Specific Custom Made	
Mounting Arrangements	Foot B3 Flange B5 Face B14 Foot Cum Face/Flange B34 / B35	
	Note: Resilient Ring, Resilient Base, Stator Pad, Lug Mounted, Stud Mounted, Belley Band Mounting can be offered on request.	
Insulation Class	Class B 130°C Class F 155°C Class F with B rise 130°C	
Motor Protection	Auto Reset On Winding Auto Reset Off Winding Manual Reset Off Winding MCB Locked Rotor Protection	
Starting Mechanism	Mechanical Centrifugal Switch Electromagnetic Relay	On request
Product Certifications	Indian BIS European CE and ATEX (Ex d) US UL (Insulation & Safety) US/Canadian CSA (On request)	
Ratings & Duty Cycle	Continuous Duty Intermittent Duty Note: Special Duty Cycle motors can be designed as per requirement	
Reference Standards	Indian IS 996, IS 325, IS/IEC 60079-1 International IEC 60034-14, IEC 60072, IEC 60079-0&1 Canadian CSA 22.2 US UL1004, UL 2111	

8

OFFERINGS

FHP Motors are used in variety of applications in households and small industrial sectors, where three phase power supply is not available. Single Phase motors are classified based on the type of starting mechanism. Widely used starting mechanisms are Split Phase, Capacitor Start and Run, Capacitor Start Induction Run & Capacitor Start Capacitor Run. Depending upon the application load characteristics, mounting suitability and cooling mechanisms, we have single phase motors in various output powers, constructions and enclosures in the product categories given below:

Description	Application	Available Range	Standards
NEMA B42/B48	Juicer, Bench Drilling Machine, Ice Cream Vending Machine, Wet Grinder, Winnowing Fan etc.	75 W to 370 W 2, 4 & 6 Pole	IS, NEMA, OTHER
HVAC MOTORS	Air Curtain, Chiller Unit, Condenser Unit, Exhaust Fan, Coil Unit, Blowers etc.	35 W to 750 W 2 & 4 Pole / 35 W to 550 W 6 Pole	IS, NEMA, OTHER
NEMA 56 Frame Motors	Wet Grinder, Surgical Pump, Paint Mixer, Vacuum Pump, Needle Vibrator, Lawn Mower, etc.	187 W to 1500 W 4 Pole / 187 W to 2250 W 2 Pole / 187 W to 750 W 6 Pole / 187 W to 750 W 8 Pole	IEC, IS, NEMA, OTHER
1005 Frame Motors	Atta Chakki, Domestic Flour Mill, Tower Hoist, Air Compressor, Thresher, etc.	110 W to 2200 W 4 Pole / 750 W 6 Pole	IS
1005 Frame Motors Wood Working Motors	Wood Planer, Cutters, Sizers & Other Wood working machinery	1500 W to 2250 W 4 Pole	IS
CI Body Motors	Coupled Pumps, Pulveriser, Rice Huller, Garage Compressor, Thresher, Floor Polisher, Groundnut Crus	75 W to 5500 W 4 pole	IS
Explosion Proof Motors	Fuel Dispenser	370 W to 750 W 4 Pole / 370 W to 1100 W 2 Pole	IEC, IS, OTHER
IEC Frame - Aluminium	Exhaust Fans, Air Curtains, Bench Drilling M/c, Hydraulic Pumps, Paint Mixing M/c, Dryers	187 W to 3000 W 2 Pole & 4 Pole	IEC, IS
Sheetal Series CI Body motor	Paddy Thresher, Chaff Cutter, Sugarcane Crusher, Rice Huller, Winnowing Fan, Garage Compressor	370 W to 2250 W 4 Pole	IEC, IS

9

MILLENNIUM SERIES/ MAESTRO SERIES

MILLENNIUM SERIES
maestro
SERIES

These motors are predominantly used for general purpose applications in MS Polled powder coated body construction. These are available in NEMA 42, 48, 56, IEC 90 and 100S frame with foot and flange mounting arrangements. Customized mounting can be provided on request.

The highly efficient double capacitor designs in this series are suitable for almost any application requiring higher starting torques such as Atta Chakki, Domestic Flour Mill, Tower Hoist, Air Compressor, Thresher.

Voltage	220 Volts or 110 Volts, 50 or 60 Hz
Power	50 Watts to 2250 Watts
Pole	2 Pole / 4 Pole / 6 Pole
Frame	NEMA 42 & 48 (50 Watts to 370 Watts) NEMA 56 (187 Watts to 1100 Watts) IEC 100S (700 Watts to 2250 Watts)
Mounting	B3, B5, B14



EXPLOSION PROOF SERIES

Agnita
Safety

These motors are exclusively designed for safety against accidental Ignition or Explosions and for continuous flawless operation in explosive or inflammable atmosphere that prevails in petrol and diesel dispensing pumps, chemical factories, petrochemical industries, fertilizer and solvent extraction plants, refineries, liquor bottling plants and paints & varnish works etc. CO's Explosion proof motors are robust, highly reliable and efficient with ATEX, Bureau of Indian Standards (BIS) and (COOE) Chief Controller of Explosives Certifications.

Voltage	220 Volts or 110 Volts, 50 or 60 Hz
Power	370 Watts to 750 Watts
Pole	4 Pole
Frame	Custom Frame
Mounting	B3

10 Other polarity/mounting on request.

RHINO SERIES

RHINO SERIES

Cast Iron Frame Motors are most popular general purpose motors in Asia. The robust, highly reliable designs are suitable for operation for a wide range of applications such as Coupled Pump, Pulveriser, Rice Hailer, Garage Compressor, Thresher, Floor Polisher. These motors can run for years without any trouble. These are offered in IEC (Metric) 80 to 132 Frame in Totally Enclosed Fan Cooled Construction.

Voltage	220 Volts or 110 Volts, 50 or 60 Hz
Power	750 Watts to 5500 Watts
Pole	2 Pole / 4 Pole
Frame	IEC 80 Frame to 160 Frame
Mounting	B3, B5, B14



ELITE SERIES

elite SERIES

IEC metric Frame single phase motors in aluminium diecast body construction. These motors cater to the needs of the global customer for light weight and efficient motors with improved ventilation and are available in IP44 & IP55 enclosures. These motors are suited for applications such as Exhaust Fans, Air Curtains, Bench Drilling M/c, Hydraulic Pumps, Paint Mixing M/c, Dryers.

Voltage	220 Volts or 110 Volts, 50 or 60 Hz
Power	125 Watts to 2250 Watts
Pole	2 Pole / 4 Pole / 6 Pole
Frame	IEC 63 Frame to 132 Frame
Mounting	B3, B5, B14

AHU SERIES

COMFORT SERIES

Air handling is the major area where highly reliable and efficient motors are required. CG has got a variety of motors in different electrical starting arrangements and constructions to suit customer requirements. These are basically in rolled steel powder coated body with Permanent Split Capacitor (PSC) or 3 Phase types. Thermal protection is optional and provided against requirement. Mostly Used in Air Curtain, Chiller Unit, Condenser Unit, Exhaust Fan, Fan Coil Unit, Blowers, etc.

Voltage	220 Volts or 110 Volts, 50 or 60 Hz
Power	22 Watts to 750 Watts
Pole	2 Pole / 4 Pole / 6 Pole
Frame	Optional - NEMA 42, 48, Custom
Mounting	Custom



SHEETAL SERIES

Sheetal SERIES

Optimized design of CI body motors for robust, rigid & compact construction with better electrical performance. Sheetal Series will cater to the needs of rural, suburban customers for CI Body motors and is available in 0.5HP-3HP in IEC 80-112 Frames. This series has an elegant design with flexible terminal box mounting & is thermally protected.

Voltage	220 Volts or 110 Volts, 50 or 60 Hz
Power	370 Watts to 2250 Watts
Pole	2 Pole / 4 Pole
Frame	IEC 80 Frame to 112 Frame
Mounting	B3

12

MOTOR ASSEMBLY EXPLODED VIEW



13

UNMATCHED STRENGTH IN MANUFACTURING

FHP Plant at Goa has the state-of-the art manufacturing plant for manufacturing of Fractional Horse Power (FHP) motors such as B48 frame, B56 frame, 100S, CI, Elite Series motors and Flameproof motors. Critical processes carried out in FHP plant are enumerated below.

1. WINDING AND IMPREGNATION

B48 and M50 frame winding is done on highly sophisticated winding line to achieve high quality of winding consistently with highest productivity on winding machines laid on single piece flow concept. Further, wound jobs are precisely checked on master-less surge tester in which momentary surge is applied to detect potential winding failure. Impregnation of inspected job is carried out and then baked uniformly in auto temperature controlled electrically heated baking oven.

2. DIE-CASTING

We have a high quality standard manufacturing facility for conductor filling for NEMA 42, 48 and 56 frames and 100S frame. All these frames are die casted on a vertical 120 ton die-casting press

3. ROTOR TURNING AND BALANCING

Rotors are precisely turned on highly productive SPM and CNC with all sizes of snap gauges to maintain the diameter and run out. Rotors are precisely dynamically balanced on balancing machines by weight addition and weight removal method.



14



4. SHELL WELDING

MS blank of required size and length as raw material is used to manufacture a shell. We have B48 frame and M50 frame seam welding shell machine and then expander to remove the ovality of the shell and maintain the required diameter of the shell and shell trimming machine for the sizing of the shell. Surface mounts such as lug/yoke/pad are welded on precise fixture on spot welding machine.

5. MACHINING

End-shield are machined on highly productive and shield machine SPM for 56 frame motors. B48 Sleeve bearing frame end-shield is done on Permawick filling machine to provide long life lubrication.

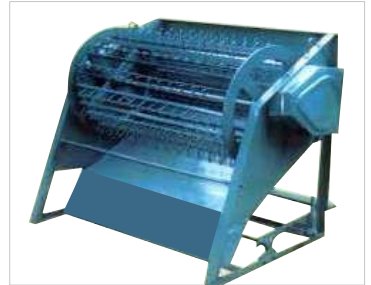
6. ASSEMBLY

Assembly layout is based on manufacturing flow lines for B48 frame / M50 frame / 100S frame / CI frame / Elite frame / FLP where product flows in one direction and on single piece flow basis. Testing is done in silence room to detect potential winding failures. All motors are 100% tested on dynamo-meter and to ascertain torque/speed characteristics before packing. General assembly process include shell expansion, shell stator pressing, drilling and dowelling, shell spigot grinding, end-shield assembly, rotor assembly, motor assembly, testing and packing.

7. RELIABILITY TESTING

FHP plant has reliability laboratory to check reliability of various critical components such as CF gear/OC switch and surface treatment such as powder coating through accelerated life cycle test. There are equipment such as meter test facility, climate control room on air conditioner, locked rotor test appliance testing bench, humidity test chamber. Design validation is done by carrying out test on customer's product or by simulating similar conditions to meet customers' expectations.

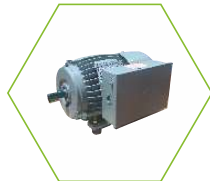
15



MOTORS FOR CHAFF CUTTER

Salient Features:

- High Starting Torque
- Suitable for wide Voltage
- Protected against Locked rotor
- ISI Mark available on select models
- Motors available in Cast Iron, Sheet metal & Aluminium body construction.



PRODUCT RANGE:

CODE	CAT REF	HP	ENCLOSURE	DUTY
GF7039	1C4HE*	1	CI Body	Heavy
GF6834	2S4MT	2	Sheet Metal	Standard
GF6564-SPL	2S4HTE*	2	Sheet Metal	Heavy
GF6565	3S4HD	3	Sheet Metal	Heavy
GF6565-TEFC	3S4HT	3	Sheet Metal	Heavy
GF7017	2C4ME*	2	CI Body	Standard
GF7041	3C4HE*	3	CI Body	Heavy

* Model available in ISI Mark 

MOTORS FOR THRESHER

Salient Features:

- Totally enclosed suitable for dusty environment .
- Capable of with standing sudden Load variations.
- Protected against Locked rotor
- Motors available in Cast Iron and Sheet metal body construction.



PRODUCT RANGE:

CODE	CAT REF	HP	ENCLOSURE	DUTY
GF6054	1S4HT	1	Sheet Metal	Heavy
GF6879	1S4HTE	1	Sheet Metal	Heavy
GF6563	1.5S4HT	1.5	Sheet Metal	Heavy
GF6564	2S4HT	2	Sheet Metal	Heavy
GF6565-TEFC	3S4HT	3	Sheet Metal	Heavy



MOTORS FOR RICE HULLERS

Salient Features :

- Suitable for wide voltage operation.
- Fitted with Thermal Protector .
- Capable of with standing sudden Load variations.
- Motors available in Cast Iron, Aluminum body construction.



PRODUCT RANGE:

CODE	CAT REF	HP	ENCLOSURE	DUTY
GF7235	3A2M	3	Al Body	Standard
GF7005	5C4H	5	CI Body	Heavy

MOTORS FOR ARECA NUT DE-HUSKING MACHINE


Salient Features :

- Suitable for wide voltage operation
- Higher torque levels
- Protected against Locked rotor
- ISI Mark available on select models.
- Motors available in Cast Iron, Sheet metal body construction.



PRODUCT RANGE:

CODE	CAT REF	HP	ENCLOSURE	DUTY
GF7058	1C4H	1	CI Body	Heavy
GF7039	1C4HE*	1	CI Body	Heavy
GF6563	1.5S4HT	1.5	Sheet Metal	Heavy
GF6564	2S4HT	2	Sheet Metal	Heavy
GF7065	2C4H	2	CI Body	Heavy
GF7017	2C4ME*	2	CI Body	Standard
GF6565-TEFC	3S4HT	3	Sheet Metal	Heavy
GF7041	3C4HE*	3	CI Body	Heavy

* Model available in ISI Mark 



MOTORS FOR INCUBATOR

Salient Features:

- Suitable for wide voltage operation
- Continuous duty operations for long life
- Thermal protection against overload and voltage variations.
- Drip proof enclosures for better ventilation



PRODUCT RANGE:

CODE	CAT REF	HP	ENCLOSURE	DUTY
GF6102	0.33S4LDE	1/3	Sheet Metal	Standard
GF6964	0.33S4LD	1/3	Sheet Metal	Standard



MOTORS FOR POWER BLOWERS

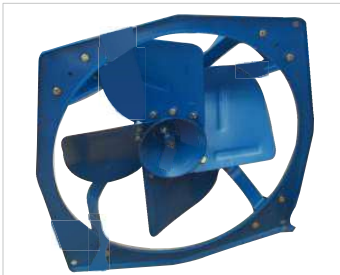
Salient Features:

- High Starting Torque.
- Suitable for wide Voltage.
- Protected against Locked rotor
- ISI Mark available on select models.
- Motors available in Cast Iron, Aluminum, Sheet metal body construction.



PRODUCT RANGE:

CODE	CAT REF	HP	ENCLOSURE	DUTY
GF6563	1.5S4HT	1.5	Sheet Metal	Heavy
GF6564	2S4HT	2	Sheet Metal	Heavy
GF6230	2S4HT-W	2	Sheet Metal	Heavy
GF6565-TEFC	3S4HT	3	Sheet Metal	Heavy
GF6567	3S4HT-W	3	Sheet Metal	Heavy



MOTORS FOR EXHAUST FANS

Salient Features:

- Low Noise , silent operations
- Suitable for wide Voltage
- Totally Enclosed Motor to prevent water and Dust entry
- Low Power Consumption

PRODUCT RANGE:

CODE	CAT REF	BLADE SIZE
GF4414	12EX4	12" Exhaust Fan
GF4390	15EX4	15" Exhaust Fan Motor
GF4378	15EX4-3	15" Exhaust Fan Motor
GF4380	18EX6-3	18" Exhaust Fan Motor
GF4389	18EX4E	18" Exhaust Fan Motor
GF4480	18EX4	18" Exhaust Fan Motor
GF4379	18EX4-3	18" Exhaust Fan Motor
GF4497	18EX4E-3	18" Exhaust Fan Motor
GF6619	24EX6	24" Exhaust Fan Motor
GF6872	24EX6E	24" Exhaust Fan Motor
GF6739	24EX6-TP	24" Exhaust Fan Motor



MOTORS FOR SEMI EXHAUST FAN

Salient Features :

- Low Noise , silent operations
- Suitable for wide Voltage
- Totally Enclosed Motor to prevent water entry
- Low Power Consumption
- Three Speed operations
- Motors available in Sheet metal body construction

PRODUCT RANGE:

CODE	CAT REF	BLADE SIZE
GF7411	12CO2E-LUG	12" Cooler Fan (Lug Mounting)
GF7410	16SE4-3	16"-Climatiser / Semi Exhaust Fan Motor
GF4527	18CO4E-3	18" Cooler Fan Motor
GF4527	18CO4E-3	18" Cooler Fan Motor
GF4558	18CO4E-3H	18" Cooler Fan Motor (Wide Speed Variation)
GF4559	18CO4E-3 STUD	18" Cooler Fan Motor





MOTORS FOR DESERT COOLERS

Salient Features:

- Low Noise , silent operations
- Suitable for wide Voltage
- Totally Enclosed Motor to prevent water entry
- Low Power Consumption
- Single and Three speed motors
- Motors available in Sheet metal body construction



PRODUCT RANGE:

CODE	CAT REF	BLADE SIZE
GF7411	12CO2E-LUG	12" Cooler Fan (Lug Mounting)
GF7410	16SE4-3	16"-Climatiser / Semi Exhaust Fan Motor
GF4379	18EX4-3	18" Exhaust Fan Motor
GF4527	18CO4E-3	18" Cooler Fan Motor
GF4550	18CO4	18" Cooler Fan Motor
GF4558	18CO4E-3H	18" Cooler Fan Motor (Wide Speed Variation)
GF4559	18CO4E-3 STUD	18" Cooler Fan Motor
GF4577R-CW	16CO4E-3 CW	16" Cooler Fan Motor
GF4577R-ACW	16CO4E-3 ACW	16" Cooler Fan Motor
GF4578R-CW	16CO4E-3 STUD	16" Cooler Fan Motor
GF4578R-ACW	16CO4E-3 STUD ACW	16" Cooler Fan Motor

Refer Annexure 1 & 2 for performance & dimension details. 24

MOTORS FOR AIR CURTAINS

Salient Features:

- Double shaft extension available
- Resilient base design available to minimize vibrations
- Silent operation
- Ball bearing designs for longer life
- Customized shaft extension & multiple speed operations can be offered on request



PRODUCT RANGE:

CODE	HP	ENCLOSURE	DUTY
GF4385	1/4	Sheet Metal	Standard
GF4516	1/4	Sheet Metal	Standard
GF4526	1/4	Sheet Metal	Standard
GF4518	1/3	Sheet Metal	Standard
GF4457	1/2	Sheet Metal	Standard
GF4528	1/2	Sheet Metal	Standard

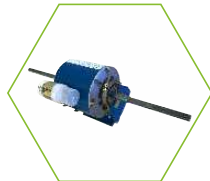
25 Refer Annexure 1 & 2 for performance & dimension details.



MOTORS FOR FAN COIL UNIT

Salient Features :

- Double shaft extension available
- 4 pole and 6 pole designs available
- Resilient base design available to minimize vibrations
- Silent operation
- Ball bearing designs for longer life
- Customized shaft extension & multiple speed operations can be offered on request



PRODUCT RANGE:

CODE	HP	ENCLOSURE	DUTY
GF4475	1/10	Sheet Metal	Standard
GF4531	1/20	Sheet Metal	Standard

MOTORS FOR BLOWERS

Salient Features :

- Permanent Split Capacitor motor suitable for low starting torque required for blower application
- 2, 4 & 6 pole designs available depending upon blower design.
- Standard Pad mounting available. Customized mounting arrangements such as lug, pad mounting can be offered on request.



PRODUCT RANGE:

CODE	CAT REF	HP	ENCLOSURE	DUTY
GF4530	0.5S4LD-4SP	1/2	Sheet Metal	Standard
GF4532	0.5S6LT-3SP	1/2	Sheet Metal	Standard
GF4534	0.75S4LD-4SP	3/4	Sheet Metal	Standard
GF7248	0.25A2L	1/4	Al Body	Standard
GF7501	0.25A4L	1/4	Al Body	Standard
GF7502	0.5A4L	1/2	Al Body	Standard
GF7254	1A2L	1	Al Body	Standard
GF7503	1A4L	1	Al Body	Standard



MOTORS FOR SODA MAKING

Salient Features :

- Motor with hub and slotted shaft. Permits close-coupling the Soda pump to the motor.
- Extended hub for direct-mounting pump to motor.
- Use for liquid transfer pumps, vending machine pumps, and other hub-mounted



PRODUCT RANGE:

CODE	CAT REF	HP	ENCLOSURE	DUTY
GF4523	0.25S4LDE-SODA	1/4	Sheet Metal	Standard
GF4555	0.25S4LD-SODA	1/4	Sheet Metal	Standard

MOTORS FOR FUEL DISPENSERS

Salient Features :

- Motor for petrol / diesel dispenser used in refilling of fuel.
- ATEX, CCOE and BIS approved Flame proof motors
- Explosive atmosphere Exd
- Suitable for Gas Group II A , IIB
- Temperature Class T4
- Equipment protective class Gb



PRODUCT RANGE:

CODE	CAT REF	HP	ENCLOSURE	DUTY
GF6442	0.75F4	3/4	Flame Proof	Heavy
GF6557	1F4	1	Flame Proof	Heavy



MOTORS FOR LAWN MOWER

Salient Features :

- Customized flange mounting
- High speed 2 pole designs available from 1 hp to 3hp
- Integrated terminal box with capacitor can be offered on request
- Thermal protection against locked rotor.



PRODUCT RANGE:

CODE	CAT REF	HP	ENCLOSURE	DUTY
GF6850	1S2HTE-LM	1	Sheet Metal	Standard
GF6785	1S2HT-LM	1	Sheet Metal	Standard
GF6155	2S2HT-LM	2	Sheet Metal	Standard
GF6897	3S2LT-LM	3	Sheet Metal	Standard

Refer Annexure 1 & 2 for performance & dimension details. 30

MOTORS FOR WOOD WORKING

Salient Features :

- High starting torque reliable designs for long life operation
- Suitable for wide voltage operation
- MCB provision for overload protection in all models
- Integrated MCB box provided with the motor in selected models
- Plug & play arrangement available in selected models
- Available in Cast Iron, sheet metal constructions



PRODUCT RANGE:

CODE	CAT REF	HP	ENCLOSURE	DUTY
GF6230	2S4HT-W	2	Sheet Metal	Heavy
GF6909	2S4HT-WCI	2	Sheet Metal	Heavy
GF6989	2S4HT-WC	2	Sheet Metal	Heavy
GF7060	2C4H1-MCB	2	Cast Iron	Heavy
GF6567	3S4HT-W	3	Sheet Metal	Heavy
GF6963	3S4HT-WCI	3	Sheet Metal	Heavy
GF6990	3S4HT-WC	3	Sheet Metal	Heavy

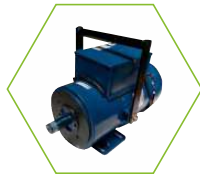
31 Refer Annexure 1 & 2 for performance & dimension details.



MOTORS FOR NEEDLE VIBRATOR

Salient Features :

- 2 pole foot cum flange or foot cum face ratings available.
- Integrated MCB box designs available in 2hp selected models
- Motors available in sheet metal body construction
- Handle can be provided for easy portability



PRODUCT RANGE:

CODE	CAT REF	HP	ENCLOSURE	DUTY
GF6156	2S2HT-NV1	2	Sheet Metal	Heavy
GF6856	2S2HT-NV2	2	Sheet Metal	Heavy
GF6959	2S2HT-NV1I	2	Sheet Metal	Heavy
GF6970	2S2HT-NV2I	2	Sheet Metal	Heavy
GF6892	2S2HTE-NV1	2	Sheet Metal	Heavy
GF6751	2S2HT-NV1T	2	Sheet Metal	Heavy
GF6877	2S2HTE-NV2	2	Sheet Metal	Heavy
GF6877-MH	2S2HTE-NV2I MH	2	Sheet Metal	Heavy
GF6832	3S2HT-NV1	3	Sheet Metal	Heavy
GF6752	3S2HT-NV1T	3	Sheet Metal	Heavy

Refer Annexure 1 & 2 for performance & dimension details. 32

MOTORS FOR MILKING PUMP

Salient Features :

- Wide voltage operation from 160V to 250V
- Heavy duty designs with higher service factor
- Embedded auto reset thermal overload protection
- Reversible connectors for ease of change of direction



PRODUCT RANGE:

CODE	HP	ENCLOSURE	DUTY
GF6991	1/4	Sheet Metal	Heavy
GF6948	1/2	Sheet Metal	Heavy
GF6968	1/2	Sheet Metal	Heavy
GF6967	1	Sheet Metal	Heavy
GF6918	1	Sheet Metal	Heavy

33 Refer Annexure 1 & 2 for performance & dimension details.



MOTORS FOR MILK CREAM SEPARATOR

Salient Features:

- Suitable for wide Voltage.
- Heavy Duty Designs.
- Lower Temperature rise designs
- Lower vibrations.



PRODUCT RANGE:

CODE	CAT REF	HP	ENCLOSURE	DUTY
GF6779	0.25S4HDE	1/4	Sheet Metal	Heavy
GF6102	0.33S4LDE	1/3	Sheet Metal	Heavy
GF6778	0.5S4HDE	1/2	Sheet Metal	Heavy

MOTORS FOR WET GRINDER

Salient Features:

- Motors for different capacity of grinders available For Commercial and Tilting type wet grinder
- Heavy duty designs available
- Class F insulation with class B temperature rise designs available
- Thermally protected designs available for protection against overload protection
- Ball bearing designs for long life operation & easy



PRODUCT RANGE:

CODE	CAT REF	HP	ENCLOSURE	DUTY
GF4451	0.25S4LDE-WG	1/4	Sheet Metal	Heavy
GF4228-BB	0.25S4LD	1/4	Sheet Metal	Heavy
GF6434	0.5S4HD	1/2	Sheet Metal	Heavy
GF6781-H	0.5S4MDE	1/2	Sheet Metal	Heavy
GF6566	1S4HD	1	Sheet Metal	Heavy
GF6784	1S4LDE	1	Sheet Metal	Heavy
GF6782	1S4HDE	1	Sheet Metal	Heavy
GF6563	1.5S4HT	1.5	Sheet Metal	Heavy
GF6564	2S4HT	2	Sheet Metal	Heavy
GF6565-TEFC	3S4HT	3	Sheet Metal	Heavy



MOTORS FOR CHICKEN DE-FEATHERING

Salient Features:

- Double capacitor (CSCR) design for higher efficiency & initial torque & lower temperature rise
- Motors available in Cast Iron, Aluminum, Sheet metal body construction.
- Various models available depending on machine requirement..



PRODUCT RANGE:

CODE	CAT REF	HP	ENCLOSURE	DUTY
GF6781-H	0.5S4MDE	1/2	Sheet Metal	Heavy
GF7038	0.5C4HE	1/2	CI Body	Heavy
GF6778	0.5S4HDE	1/2	Sheet Metal	Heavy
GF6782	1S4HDE	1	Sheet Metal	Heavy
GF6566	1S4HD	1	Sheet Metal	Heavy

MOTORS FOR ATTA CHAKKI & DOUGH KNEADER

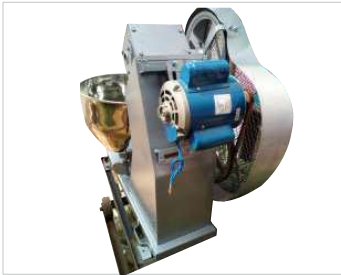
Salient Features:

- High torque to withstand momentary overload & better grinding.
- Suitable for wide Voltage.
- Protected against Locked rotor
- TEFC models to prevent ingress of flour in motor.
- Motors available in Cast Iron & Sheet metal body.



PRODUCT RANGE:

CODE	CAT REF	HP	ENCLOSURE	DUTY
GF6054	1S4HT	1	Sheet Metal	Heavy
GF6563	1.5S4HT	1.5	Sheet Metal	Heavy
GF6564	2S4HT	2	Sheet Metal	Heavy
GF6834	2S4MT	2	Sheet Metal	Standard
GF7017	2C4ME	2	Cast Iron	Standard
GF7010	2C4M	2	Cast Iron	Standard
GF7065	2C4H	2	Cast Iron	Heavy
GF6565-TEFC	3S4HT	3	Sheet Metal	Heavy
GF6567	3S4HT-W	3	Sheet Metal	Heavy
GF7041	3C4HE	3	Cast Iron	Heavy



MOTORS FOR KITCHEN & BAKERY EQUIPMENT

Salient Features:

- Different models available depending on application requirement.
- Flange & foot mounted available as standard models. Special mounting can be offered on request.
- Motors available in Cast Iron, Aluminium body & Sheet metal body construction.
- Applications: Slicer, Bread cutting, Masala Mincer, Grinder, Vegetable Cutter.

PRODUCT RANGE:

CODE	CAT REF	HP	ENCLOSURE	DUTY
GF6778	0.5S4HDE	1/2	Sheet Metal	Heavy
GF6890	0.5S4HDE-CSCR	1/2	Sheet Metal	Heavy
GF6566	1S4HD	1	Sheet Metal	Heavy
GF6782	1S4HDE	1	Sheet Metal	Heavy
GF7058	1C4H	1	Cast Iron	Heavy
GF6782	1S4HDE	1	Cast Iron	Standard
GF6563	1.5S4HT	1.5	Sheet Metal	Heavy
GF7010	2C4M	2	Cast Iron	Standard
GF7065	2C4H	2	Cast Iron	Heavy



MOTORS FOR JUICER

Salient Features:

- Suitable for multiple start & stop operations.
- High pull out Torque.
- High efficiency & cool running
- High reliability for trouble free operations
- Motors available in Aluminum Body & Sheet metal body construction.

PRODUCT RANGE:

CODE	CAT REF	HP	ENCLOSURE	DUTY
GF6778	0.5S4HDE	1/2	Sheet Metal	Heavy
GF6782	1S4HDE	1/2	Sheet Metal	Standard
GF6434	0.5S4HD	1	Sheet Metal	Heavy
GF6566	1S4HD	1	Sheet Metal	Heavy





MOTORS FOR MASALA GRINDER

Salient Features:

- High pull out Torque.
- High efficiency & cool running
- High reliability for trouble free operations
- Suitable for multiple start & stop operations.
- Suitable for wide Voltage.
- Motors available in Cast Iron, Aluminum, Sheet metal body construction.



PRODUCT RANGE:

CODE	CAT REF	HP	ENCLOSURE	DUTY
GF6090	0.25S4LDE	1/4	Sheet Metal	Standard
GF6152	0.25S4L1D	1/4	Sheet Metal	Standard

MOTORS FOR DRILL MACHINE

Salient Features:

- Low Vibration
- High Starting Torque.
- Suitable for wide Voltage.
- Protected against Locked rotor
- Motors available in Cast Iron, Aluminum, Sheet metal body, construction



PRODUCT RANGE:

CODE	CAT REF	HP	ENCLOSURE	DUTY
GF6778	0.5S4HDE	1/2	Sheet Metal	Heavy
GF6782	1S4HDE	1	Sheet Metal	Heavy
GF6566	1S4HD	1	Sheet Metal	Heavy



MOTORS FOR COMPRESSORS

Salient Features:

- High Starting Torque.
- Suitable for wide Voltage.
- Protected against Locked rotor
- Suitable for multiple start & stop operations.
- Motors available in Cast Iron & Sheet metal body construction.

PRODUCT RANGE:

CODE	CAT REF	HP	ENCLOSURE	DUTY
GF6890	0.5S4HDE-CSCR	0.5	Sheet Metal	Heavy
GF6054	1S4HT	1	Sheet Metal	Heavy
GF6566	1S4HD	1	Sheet Metal	Heavy
GF6782	1S4HDE	1	Sheet Metal	Heavy
GF7058	1C4H	1	Cast Iron	Heavy
GF6563	1.5S4HT	1.5	Sheet Metal	Heavy
GF6834	2S4MT	2	Sheet Metal	Standard
GF6564	2S4HT	2	Sheet Metal	Heavy
GF6564-SPL	2S4HTE	2	Sheet Metal	Heavy
GF7065	2C4H	2	Cast Iron	Heavy
GF6565-TEFC	3S4HT	3	Sheet Metal	Heavy
GF7003	3C4H	3	Cast Iron	Heavy



MOTORS FOR HI MAST APPLICATIONS

Salient Features:

- Motors suitable for short duty, high torque application.
- Motors available in Sheet metal body construction both single & three phase.

PRODUCT RANGE:

CODE	CAT REF	HP	ENCLOSURE	DUTY
GF6563	1.5S4HT	1.5	Sheet Metal	Standard
GF6794	2S4MD-TP	2	Sheet Metal	Standard
GF6798	3S4MD-TP	3	Sheet Metal	Standard





MOTORS FOR GEAR BOX AND HYDRAULIC PACKS

Salient Features :

- High Starting Torque.
- IEC flange Mounted motors
- Protected against Locked rotor
- High efficiency & cool running
- Motors available in Cast Iron, Aluminum body & Sheet metal body construction.



PRODUCT RANGE:

CODE	CAT REF	HP	ENCLOSURE	DUTY
GF6795	0.5S4HTE-FLG	1/2	Sheet Metal	Heavy
GF6940	0.5S4HT-FLG	1/2	Sheet Metal	Heavy
GF6938	1S4HTE-FLG	1	Sheet Metal	Heavy
GF6941	1S4HT-FLG	1	Sheet Metal	Heavy
GF7020	1C4M-FLG	1	Cast Iron	Heavy
GF6956	2S4MT-FLG	2	Sheet Metal	Heavy
GF7059	2C4M-FLG	2	Cast Iron	Heavy
GF6942	3S4HT-FLG	3	Sheet Metal	Heavy
GF7048	3C4H-FLG	3	Cast Iron	Heavy

MOTORS FOR PAINT MIXING

Salient Features:

- Suitable for frequent start & stop.
- Low Vibration & noise levels - Silent running
- Low temperature rise.
- Motors available in Aluminum & Sheet



PRODUCT RANGE:

CODE	CAT REF	HP	ENCLOSURE	DUTY
GF6890	0.5S4HDE-CSCR	1/2	Sheet Metal	Heavy
GF8617	0.5S4H1D-HYB	1/2	Sheet Metal	Heavy
GF6566	1S4HD	1	Sheet Metal	Heavy



MOTORS FOR SURGICAL PUMPS

Salient Features:

- PSC design for highly reliable & long life operations
- Low noise designs
- Sheet metal body motors available in both NEMA 48 & 56 designs

PRODUCT RANGE:

CODE	CAT REF	HP	ENCLOSURE	DUTY
GF6962	0.25S4LD-SP	1/4	Sheet Metal	Heavy
GF6347	0.25S4LDE-SP	1/4	Sheet Metal	Heavy
GF4228-BB	0.25S4LD	1/4	Sheet Metal	Heavy
GF4453	0.25S4LDE-WGCW	1/4	Sheet Metal	Heavy



MOTORS FOR VERTICAL INLINE PUMPS

Salient Features:

- Suitable for frequent start and stop
- Low Vibration & noise levels - Silent running
- Low temperature rise
- Light in weight and aesthetically superior designs
- B14 mounting for vertical arrangement
- Integrated terminal box cum capacitor cover for better aesthetics
- Stainless steel shaft can be offered on request
- Motors available in Aluminum & Sheet metal body construction.

PRODUCT RANGE:

CODE	HP	ENCLOSURE	DUTY
GF7231	1.5	Al Body	Standard
GF7232	2	Al Body	Standard
GF7233	3	Al Body	Standard





MOTORS FOR VACUUM PUMPS

Salient Features:

- Range available in 1/3, 1/2 and 3/4 hp
- Flange & Face designs both available
- Higher torque designs available as per the load requirements
- Thermal protection provided
- Motors available in Cast Iron, Aluminum and Sheet metal body construction

PRODUCT RANGE:

CODE	HP	ENCLOSURE	DUTY
GF6720	1/2	Sheet Metal	Heavy
GF6874	1/2	Sheet Metal	Heavy
GF7518	1/2	Al Body	Heavy
GF6719	1/3	Sheet Metal	Heavy
GF6804	3/4	Sheet Metal	Heavy
GF6875	3/4	Sheet Metal	Heavy
GF7517	3/4	Al Body	Heavy



MOTORS FOR POUCH PACKING MACHINES

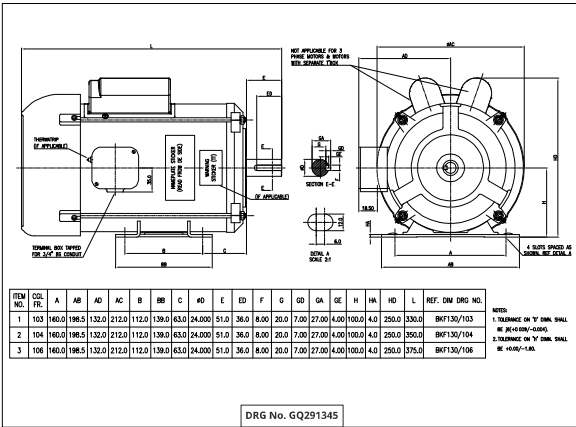
Salient Features:

- CSIR & CSCR designs available for high starting torque
- Suitable for frequent start and stop
- Low vibration & noise levels
- Low temperature rise
- Motors available in Aluminum & Sheet metal body

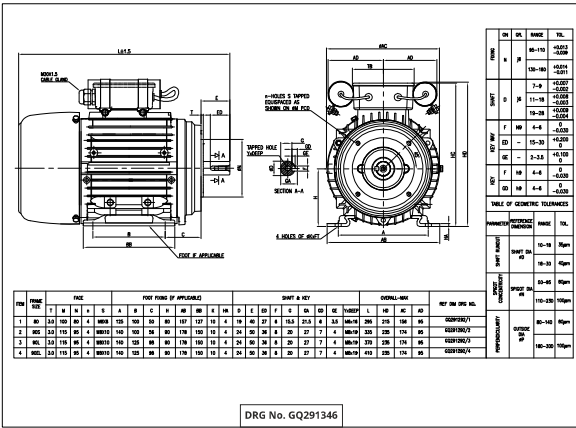
PRODUCT RANGE:

CODE	CAT REF	HP	ENCLOSURE	DUTY
GF6779	0.25S4HDE	1/4	Sheet Metal	Heavy
GF6778	0.5S4HDE	1/2	Sheet Metal	Heavy
GF6890	0.5S4HDE-CSCR	1/2	Sheet Metal	Heavy
GF6434	0.5S4HD	1/2	Sheet Metal	Heavy

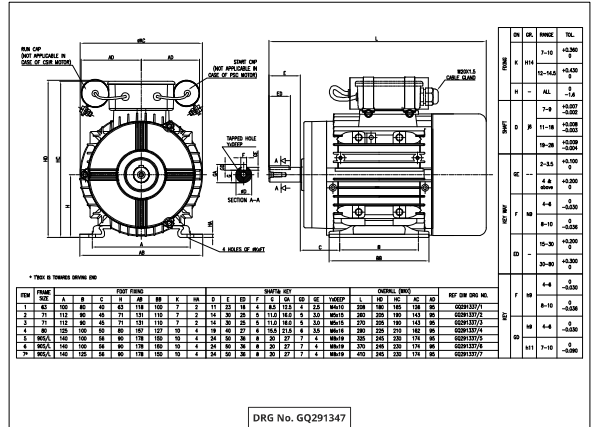




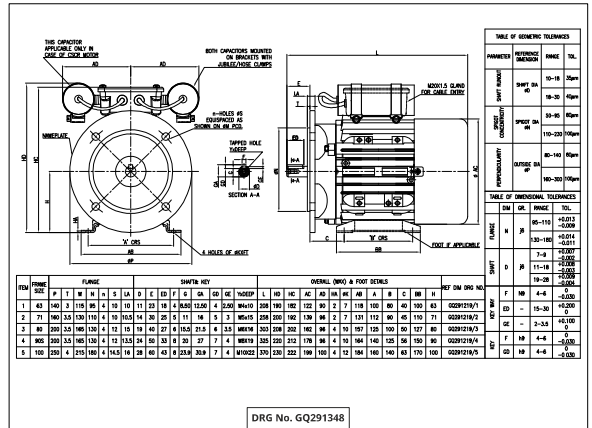
DRG No. GQ291345



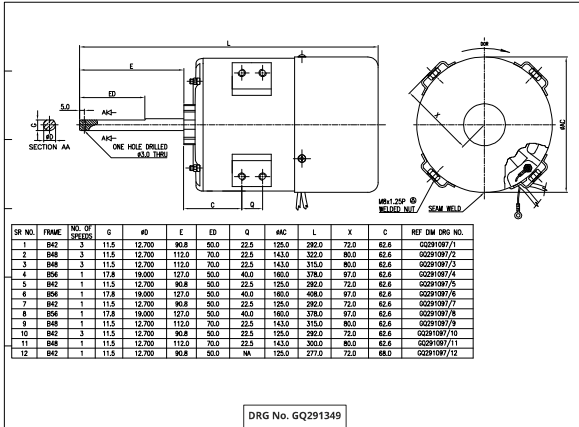
DRG No. GQ291346



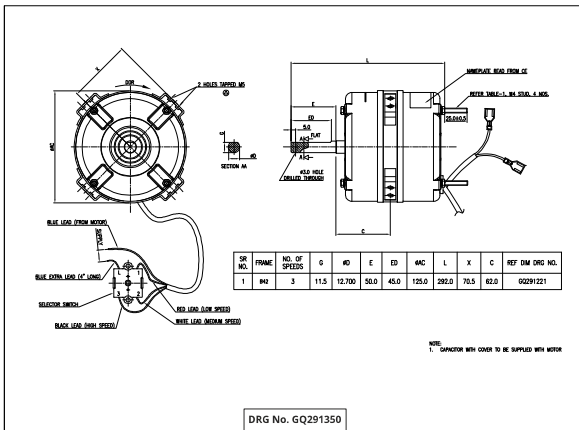
DRG No. GQ291347



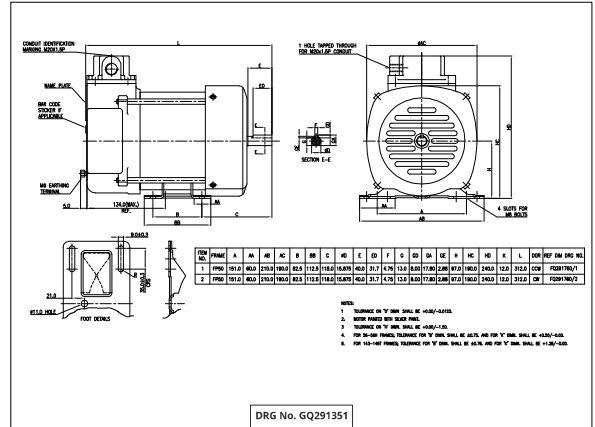
DRG No. GQ291348



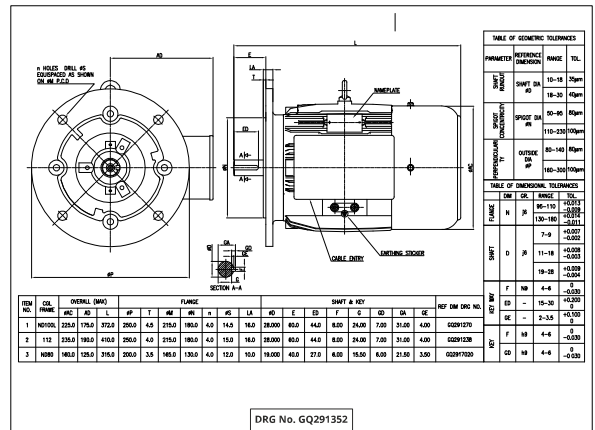
DRG No. GQ291349



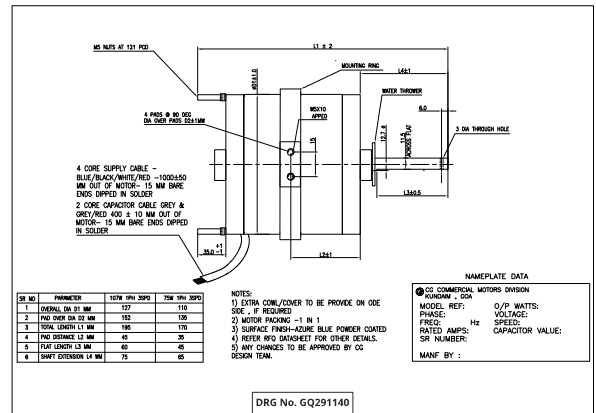
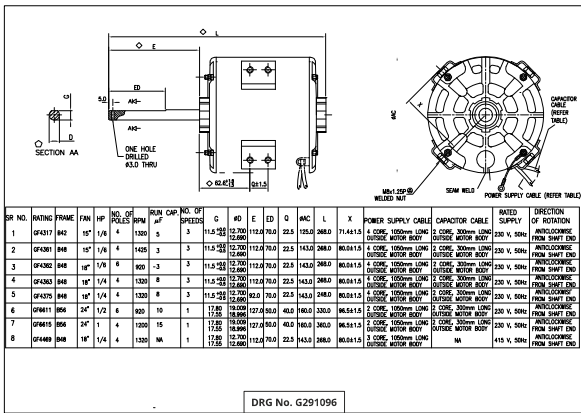
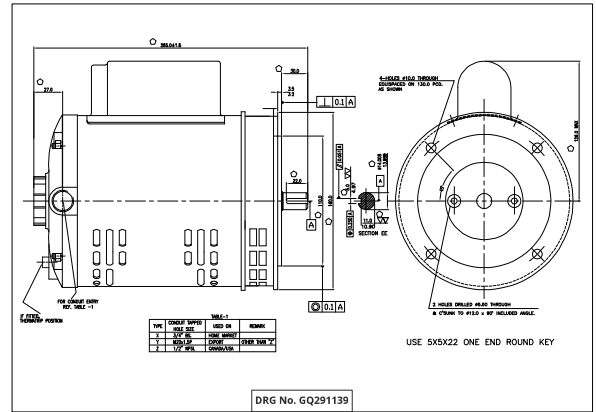
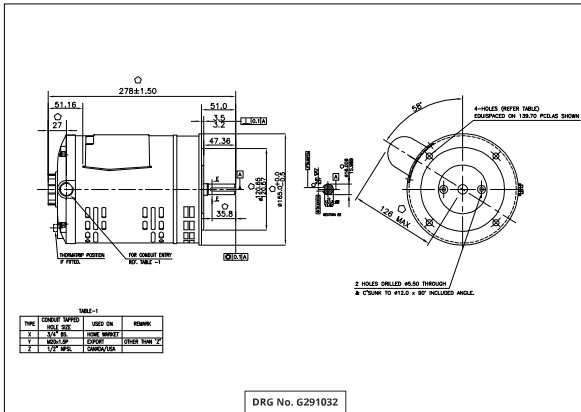
DRG No. GQ291350

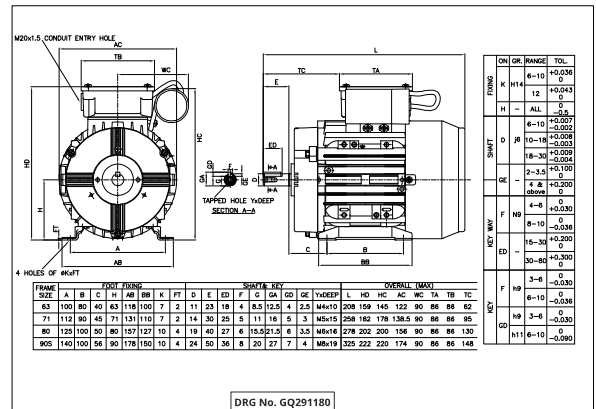
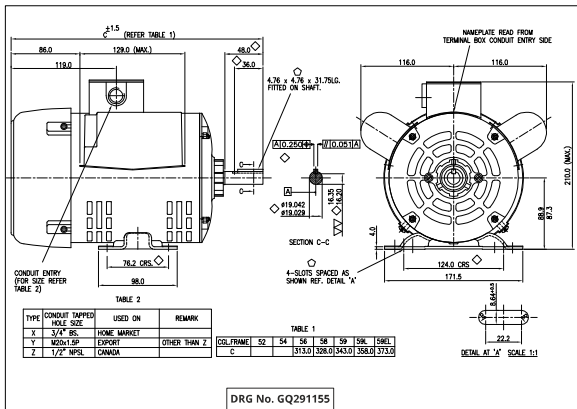
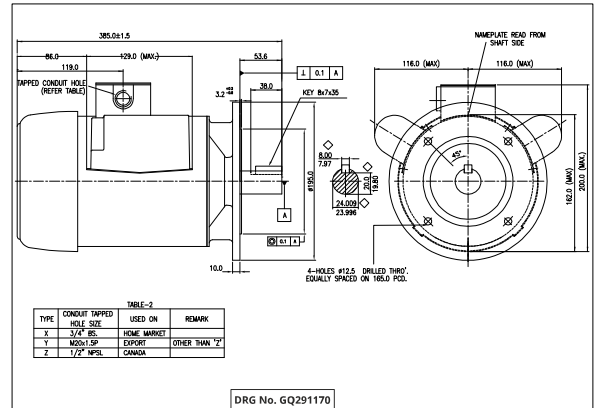
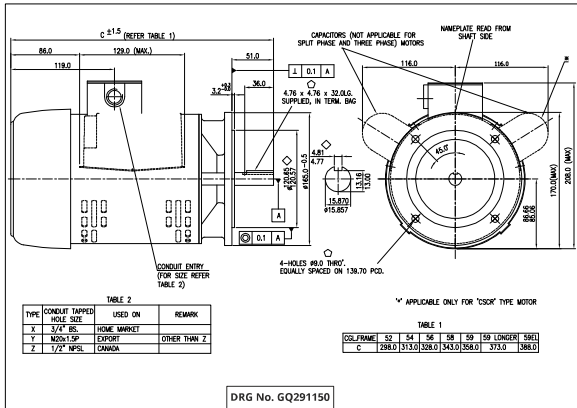


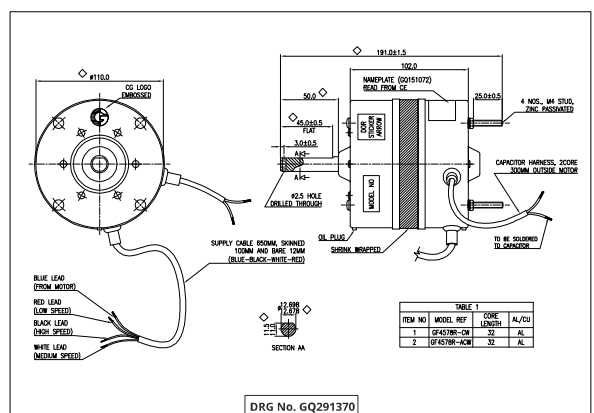
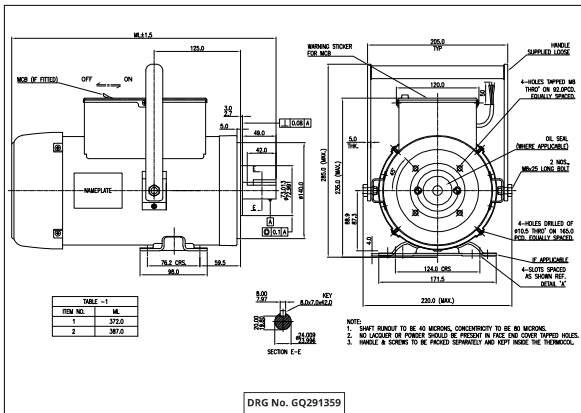
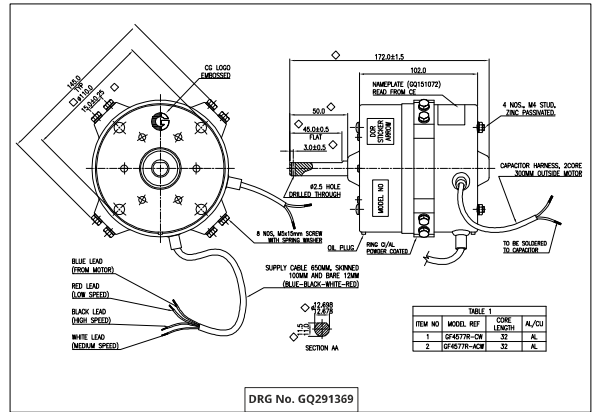
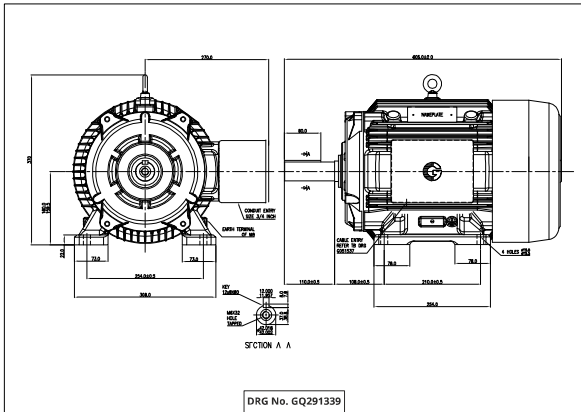
DRG No. GQ291351



DRG No. GQ291352







PERFORMANCE OF MOTORS (ANNEXURE 2)

Code	CAT REF	HP	Watts	Pole	Body Type	Frame	Enclosure	Type	Mounting	Rated Voltage (Volts)	Rated Current (Amp.)	Rated Speed (RPM)	Rated Torque Kg-Cm	STT (%FLT)	BDT (%FLT)	RUT (%FLT)	DOR	Dimension drawing no.	Net Wt Kg
GF4278-8B	0.25S4LD	0.25	180	4	Sheet Metal	B48	DP	PSC	FOOT	230	2	1425	12	100	180	NA	CCWDE	GQ2914218	8
GF4378	18EX4-3	0.16	120	4	Sheet Metal	B42	TE	PSC	PAD	230	1	1320	6	60	130	NA	CCWDE	GQ2914361	6
GF4379	18EX4-3	0.25	180	4	Sheet Metal	B48	TE	PSC	PAD	230	1.5	1320	13	70	140	NA	CCWDE	GQ2914349.3	5.5
GF4380	18EX6-3	0.16	125	6	Sheet Metal	B48	TE	PSC	PAD	230	1.5	920	10	40	130	NA	CCWDE	GQ2914363	5.5
GF4389	18EX4E	0.25	180	4	Sheet Metal	B48	TE	PSC	PAD	230	1.5	1320	13	70	150	NA	CCWDE	GQ291349.9	5.1
GF4390	15EX4	0.167	125	4	Sheet Metal	B42	TE	PSC	PAD	230	1	1320	6	60	130	NA	CCWDE	GQ291349.2	5.5
GF4414	12EX4	0.125	90	4	Sheet Metal	95DA	TE	PSC	PAD	230	0.5	1400	3	80	170	NA	CCWDE	GQ291105	4.5
GF4451	0.25S4LDE-WG	0.25	180	4	Sheet Metal	B48	DP	PSC	FOOT	230	2	1400	13	80	180	NA	CCWDE	GQ2914218.2	5.5
GF4453	0.25S4LDE-WGCW	0.25	180	4	Sheet Metal	B48	DP	PSC	FOOT	230	2	1400	13	80	180	NA	CCWDE	GQ2914218.2	6
GF4480	18EX4	0.25	180	4	Sheet Metal	B48	TE	PSC	PAD	230	1.5	1320	13	70	140	NA	CCWDE	GQ291349.2	5.4
GF4497	18EX4E-3	0.25	180	4	Sheet Metal	B48	TE	PSC	PAD	230	1.5	1320	13	60	130	NA	CCWDE	GQ291349.3	6
GF4519	16SE4E-3	0.14	107	4	Sheet Metal	B42	TE	PSC	PAD	230	1	1400	8	50	150	NA	CCWDE	GQ291207	5.5
GF4523	0.25S4LDE-SODA	0.25	180	4	Sheet Metal	B48	DP	PSC	FOOT + HUB	230	2	1400	12	80	180	NA	CCWDE	GQ291220	7.5
GF4527	18CO4E-3	0.14	107	4	Sheet Metal	B42	TE	PSC	PAD	230	0.9	1320	7	50	120	NA	CCWDE	GQ291350	5.5
GF4550	18CO4	0.14	107	4	Sheet Metal	B42	TE	PSC	PAD	230	0.9	1320	7	60	180	NA	CCWDE	GQ291350	5.5
GF4553	12EX2E	0.33	25	2	Sheet Metal	95DA	TE	PSC	PAD	230	0.5	2250	1	100	250	NA	CCWDE	GQ291293	4.5
GF4555	0.25S4LD-SODA	0.25	180	4	Sheet Metal	B48	DP	PSC	FOOT + HUB	230	2	1400	12	80	180	NA	CCWDE	GQ291220	8
GF4558	18CO4E-3H	0.14	107	4	Sheet Metal	B42	TE	PSC	PAD	230	0.9	1320	7	50	130	NA	CCWDE	GQ291350	5.5
GF4559	18CO4E-3 STUD	0.14	107	4	Sheet Metal	B43	TE	PSC	PAD	230	0.9	1320	7	50	130	NA	CCWDE	GQ291330	5.5
GF4577R-ACW	16CO4E-3 ACW	0.14	107	4	Sheet Metal	110DIA	TE	PSC	PAD	230	1	1400	8	50	160	NA	CCWDE	GQ291369	3.5
GF4577R-CW	16CO4E-3 CW	0.14	107	4	Sheet Metal	110DIA	TE	PSC	PAD	230	1	1400	8	50	160	NA	CCWDE	GQ291369	3.5
GF4578R-ACW	16CO4E-3 STUD ACW	0.14	107	4	Sheet Metal	110DIA	TE	PSC	STUD	230	1	1400	8	50	160	NA	CCWDE	GQ291370	3.5
GF4578R-CW	16CO4E-3 STUD	0.14	107	4	Sheet Metal	110DIA	TE	PSC	STUD	230	1	1400	8	50	160	NA	CCWDE	GQ291370	3.5
GF6854	15AHIT	1	750	4	Sheet Metal	B56	TEFC	CSIR	FOOT	220/230	6	1425	51	320	230	220	REV	GQ291343.3	15.8
GF6900	0.25S4LDE	0.25	180	4	Sheet Metal	B56	DP	PSC	FOOT	160/240	2.1	1425	13	130	220	NA	CCWDE	FQ2911544	8
GF6901	0.5S4MTE	0.5	370	4	Sheet Metal	B56	TEFC	CSIR	FOOT	220/230	4.5	1425	25	320	230	200	REV	FQ291152156	9
GF6903	0.25S4LDE-SP	0.25	180	4	Sheet Metal	B56	DP	SPLIT PHASE	FOOT	220/230	2.6	1425	13	170	270	90	REV	FQ291152552	8
GF6102	0.3S4LDE	0.33	250	4	Sheet Metal	B56	DP	PSC	FOOT	160/240	2.5	1425	17	80	220	NA	REV	GQ2916102	14
GF6132	0.5S2HD	0.5	370	2	Sheet Metal	B56	DP	CSIR	FOOT	230	3.7	2800	12	270	210	170	REV	FQ2911525	8
GF6133	1S2HD	1	750	2	Sheet Metal	B56	DP	CSIR	FOOT	220/230	7	2800	26	270	210	170	REV	FQ291152558	15
GF6144	1S2HT	1	750	2	Sheet Metal	B56	TEFC	CSIR	FOOT	220/230	6	2800	26	310	300	170	REV	GQ291343.1	14
GF6155	2S2HTLM	2	1500	2	Sheet Metal	B56	TEFC	CSIR	FLANGE	220/230	9	2800	51	200	200	150	REV	GQ291354.0	19.8
GF6156	2S2HT-NV1	2	1500	2	Sheet Metal	B56	TEFC	CSIR	FOOT + FLANGE	220/230	9	2800	51	200	200	150	REV	GQ291354.3	20.4
GF6217	2S2HT	2	1500	2	Sheet Metal	B56	TEFC	CSCR	FOOT	220/230	9	2800	51	200	200	150	REV	GQ291343.3	18
GF6230	2S4HT-W	2	1500	4	Sheet Metal	100S	TEFC	CSCR	FOOT	190/230	11.5	1440	101	250	250	170	REV	GQ291345.2	24
GF6347	0.25S4LDE-SP	0.25	180	4	Sheet Metal	B56	DP	SPLIT PHASE	FOOT	220/230	2.6	1425	13	170	270	100	REV	FQ291152562	6.5
GF6434	0.5S4HD	0.5	370	4	Sheet Metal	B56	DP	CSIR	FOOT	220/230	4.2	1425	25	300	230	200	REV	FQ291152554	11
GF6442	0.75F4	0.75	550	4	Sheet Metal	FP50	TEFC	CSCR	FOOT	220	4.1	1425	38	280	300	250	CCWDE	GQ2915512	27
GF6557	1F4	1	750	4	Sheet Metal	FP50	TEFC	CSCR	FOOT	220	5	1425	51	230	250	180	CCWDE	GQ2915512	28
GF6563	1.5S4HT	1.5	1100	4	Sheet Metal	100S	TEFC	CSCR	FOOT	190/240	8.8	1440	77	250	220	180	REV	GQ291345.1	19.8
GF6564	2S4HT	2	1500	4	Sheet Metal	100S	TEFC	CSCR	FOOT	190/240	10.5	1440	101	250	220	150	REV	GQ291345.2	24
GF6564-SPL	2S4HTE	2	1500	4	Sheet Metal	100S	TEFC	CSCR	FOOT	190/240	10.5	1440	101	240	220	150	REV	GQ291345.3	24.9
GF6565	3S4HD	3	2250	4	Sheet Metal	100S	DPFC	CSCR	FOOT	190/240	13.5	1440	153	220	200	150	REV	GQ291345.3	30.45
GF6565-TEFC	3S4HT	3	2250	4	Sheet Metal	100S	TEFC	CSCR	FOOT	220/230	13.5	1440	153	220	200	150	REV	GQ291345.3	28
GF6566	1S4HD	1	750	4	Sheet Metal	B56	DPFC	CSCR	FOOT	220/230	7.6	1425	51	250	230	200	REV	GQ291343.3	15
GF6567	3S4HT-W	3	2250	4	Sheet Metal	100S	TEFC	CSCR	FOOT	210	15	1440	153	210	200	150	REV	GQ291345.3	27.9
GF6619	24EX6	0.5	370	6	Sheet Metal	B56	TE(AOM)	PSC	PAD	230	2.7	920	39	30	110	NA	CCWDE	GQ291066.6	10
GF6739	24EX6-TP	0.5	370	6	Sheet Metal	B56	TE(AOM)	THREE PHASE	PAD	380/440	1.1	930	39	140	170	NA	REV	GQ291066.8	12
GF6741	0.5S4HD-NFLG	0.5	370	4	Sheet Metal	B56	DP	CSIR	FLANGE	220/230	4.2	1425	25	360	220	200	REV	GQ291032	12
GF6742	2S4HT-NFLG	2	1500	4	Sheet Metal	100S	TEFC	CSCR	FLANGE	190/240	9.5	1440	101	220	250	180	REV	GQ2911343	24
GF6743	1S4HD-NFLG	1	750	4	Sheet Metal	B56	DPFC	CSIR	FLANGE	220/230	7.6	1425	51	250	230	200	REV	GQ2911501	16
GF6751	2S2HT-NV1T	2	1500	2	Sheet Metal	B56	TEFC	THREE PHASE	FOOT + FLANGE	415	3.5	2800	51	210	220	NA	REV	GQ291354.3	14
GF6752	3S2HT-NV1T	3	2250	2	Sheet Metal	B56	TEFC	THREE PHASE	FOOT + FLANGE	415	5	2800	51	400	300	270	REV	GQ291354.4	14
GF6776	0.5S4HDE	0.5	370	4	Sheet Metal	B56	DP	CSIR	FOOT	220/230	4.5	1425	25	320	220	200	REV	FQ291152554	10.5
GF6779	0.25S4HDE	0.25	180	4	Sheet Metal	B56	DP	CSIR	FOOT	220/230	2.8	1425	12	330	280	200	REV	FQ291152554	7.5
GF6781-H	0.5S4MDE	0.5	370	4	Sheet Metal	B56	DP	CSCR	FOOT	220/230	3	1425	26	250	200	170	REV	FQ2911541	9

Note : Since our motors are subjected to continuous improvements, the performance/dimensions of the motors may vary from the details indicate in the table above

Code	CAT REF	HP	Watts	Pole	Body Type	Frame	Enclosure	Type	Mounting	Rated Voltage (Volts)	Rated Current (Amp.)	Rated Speed (RPM)	Rated Torque Kg-Cm	STT (%FLT)	BDT (%FLT)	RUT (%FLT)	DOR	Dimension drawing no.	Net Wt Kg
GF6782	1S4HDE	1	750	4	Sheet Metal	B56	DPFC	CSCR	FOOT	220/230	5.5	1425	51	250	220	200	REV	GQ291343/3	14.3
GF6784	1S4HDE	1	750	4	Sheet Metal	B56	DP	CSCR	FOOT	220/230	5.5	1425	51	240	200	170	REV	FQ291353/158X	12
GF6785	1S2HT-LM	1	750	2	Sheet Metal	B56	TEFC	CSCR	FLANGE	220/230	6	2800	26	300	300	170	REV	GQ291354/5	12
GF6793	1S4MD-TP	1	750	4	Sheet Metal	S80	DPFC	THREE PHASE	FOOT	415/240	2.23.5	1425	51	250	230	210	REV	GQ291343/5	14
GF6794	2S4MD-TP	2	1500	4	Sheet Metal	S90	DPFC	THREE PHASE	FOOT	415/240	3.66.2	1425	103	350	350	300	REV	GQ291343/6	18
GF6795	0.5S4HTE-FLG	0.5	370	4	Sheet Metal	M50	TEFC	CSIR	FLANGE	220/230	4.5	1425	26	310	220	190	REV	GQ291354/11	9
GF6796	0.25S4MTE-FLG	0.25	180	4	Sheet Metal	M50	TEFC	CSIR	FLANGE	220/230	2.8	1425	12	320	280	200	REV	GQ291354/10	8
GF6797	0.25S4MDE-FLG	0.25	180	4	Sheet Metal	B56	DP	CSIR	71 FLANGE	220/230	2.8	1425	12	320	280	200	CVIDE	GQ291395/4x	8
GF6798	1S4MD-TP	3	2250	4	Sheet Metal	100L	DPFC	THREE PHASE	FOOT	415/240	9.6	1440	153	300	300	240	REV	GQ291343/7	24
GF6805	1.5S4MD-TP	1.5	1100	4	Sheet Metal	S90	DPFC	THREE PHASE	FOOT	415	2.8	1425	77	270	270	220	REV	GQ291343/6	16
GF6806	1.5S4MDE	1.5	1100	4	Sheet Metal	B56	DPFC	CSCR	FOOT	220/230	7.2	1425	75	240	250	170	REV	GQ291155/59EL	17.7
GF6823	2S4LT-FLG	2	1500	4	Sheet Metal	B56	TEFC	CSCR	FLANGE	220	10.5	1425	102	240	250	160	REV	GQ291170/X	20
GF6828	0.5S2HTE	0.5	375	2	Sheet Metal	B56	TEFC	CSCR	FOOT	220/230	3.5	2800	12	370	300	230	REV	GQ291343/1	8
GF6829	1S2HTE	1	750	2	Sheet Metal	B56	TEFC	CSCR	FOOT	220/230	5	2800	26	280	260	180	REV	GQ291343/2	16
GF6832	3S2HT-NV1	3	2250	2	Sheet Metal	B56	TEFC	CSCR	FOOT+FLANGE	225	14.5	2800	78	220	270	170	REV	GQ291354/4	26.4
GF6834	2S4MT	2	1500	4	Sheet Metal	100S	TEFC	CSCR	FOOT	190/240	9.5	1440	101	230	250	160	REV	GQ291343/2	22
GF6850	1S2HTE-LM	1	750	2	Sheet Metal	B56	TEFC	CSCR	FLANGE	220/230	5	2800	26	280	260	180	REV	GQ291354/5	16.5
GF6851	1S4MDE-TP	1	750	4	Sheet Metal	S80	DPFC	THREE PHASE	FOOT	415/240	20.5	1425	51	280	280	200	REV	GQ291343/8	14
GF6852	2S4MDE-TP	2	1500	4	Sheet Metal	S90	DPFC	THREE PHASE	FOOT	415/240	3.66.2	1425	102	300	300	220	REV	GQ291343/9	17.7
GF6853	3S4MDE-TP	3	2250	4	Sheet Metal	100L	DPFC	THREE PHASE	FOOT	415/240	4.68.0	1440	153	250	320	250	REV	GQ291343/7	22
GF6854	1.5S4MDE-TP	1.5	1125	4	Sheet Metal	S90	DPFC	THREE PHASE	FOOT	415/240	2.74.7	1425	76	260	270	210	REV	GQ291343/6	18
GF6856	2S2HT-NV2	2	1500	2	Sheet Metal	B56	TEFC	CSCR	FOOT + FACE	220/230	9	2800	51	200	200	150	REV	GQ291355/3	21
GF6872	24EXE	0.5	370	6	Sheet Metal	B56	TELAOM	PSC	PAD	230	2.7	920	39	30	110	NA	CCWDE	GQ291096/6	9.7
GF6877	2S4HTE-NV2	2	1500	2	Sheet Metal	B56	TEFC	CSCR	FOOT + FACE	220/230	9	2800	51	200	200	150	REV	GQ291355/4	21
GF6877.4MH	2S2HTE-NV2IMH	2	1500	2	Sheet Metal	B56	TEFC	CSCR	FOOT+FACE	220/230	9	2800	51	200	200	140	REV	GQ291359/2	28
GF6879	1S4HTE	1	750	4	Sheet Metal	B56	TEFC	CSCR	FOOT	220/230	5.5	1425	51	250	210	200	REV	GQ291343/3	15
GF6890	0.5S4HDE-CSCR	0.5	370	4	Sheet Metal	B56	DP	CSCR	FOOT	220/230	3	1425	25	320	230	210	REV	FQ291491/56L	10.8
GF6892	2S2HTE-NV1	2	1500	2	Sheet Metal	B56	TEFC	CSCR	FOOT + FLANGE	220/230	9	2800	51	200	200	150	REV	GQ291354/4	20
GF6897	3S2LT-LM	3	2250	2	Sheet Metal	B56	TEFC	CSCR	FLANGE	225	15	2800	78	200	200	120	REV	GQ291354/8	20.7
GF6901	1.5S4HTE	1.5	1100	4	Sheet Metal	100S	TEFC	CSCR	FOOT	190/240	8.8	1440	77	260	230	210	REV	GQ291343/2	21.3
GF6902	2S4LT	2	1500	4	Sheet Metal	100S	TEFC	CSCR	FOOT	190/240	9.5	1440	102	220	250	160	REV	GQ291343/3	23.8
GF6904	2S4HTE-W	2	1500	4	Sheet Metal	100S	TEFC	CSCR	FOOT	190/240	11.5	1440	102	240	250	170	REV	GQ291343/5	21
GF6909	2S4HT-WCI	2	1500	4	Sheet Metal	100S	TEFC	CSCR	FOOT	190/230	11.5	1440	101	240	250	170	REV	GQ291343/2	21
GF6930	0.5S4MTE-FLGTP	0.5	370	4	Sheet Metal	S71	TEFC	THREE PHASE	FLANGE	415/240	1.42.4	1425	25	320	320	200	REV	GQ291271/2	10
GF6931	1S4MDE-FLGTP	1	750	4	Sheet Metal	S80	DPFC	THREE PHASE	FLANGE	415/240	20.5	1425	51	280	300	200	REV	GQ291271/3	14
GF6932	2S4MDE-FLGTP	2	1500	4	Sheet Metal	S90	DPFC	THREE PHASE	FLANGE	415/240	3.66.2	1425	102	300	300	220	REV	GQ291271/5	18
GF6933	1.5S4MDE-FLGTP	1.5	1125	4	Sheet Metal	S90	DPFC	THREE PHASE	FLANGE	415/240	2.74.7	1425	76	260	270	210	REV	GQ291271/4	16.5
GF6936	0.25S4HTE-FLGTP	0.25	180	4	Sheet Metal	S63	TEFC	Three phase	FLANGE	415/240	0.75/1.3	1400	13	290	320	200	REV	GQ291271/1	10
GF6937	0.25S4HTE-FLG	0.25	180	4	Sheet Metal	63	TEFC	CSCR	FLANGE	220/230	2.5	1425	13	370	300	200	CVIDE	GQ291354/3	8
GF6938	1S4HTE-FLG	1	750	4	Sheet Metal	80	TEFC	CSCR	FLANGE	220/230	5.5	1425	51	250	220	200	REV	GQ291354/1	14
GF6939	0.25S4HT-FLG	0.25	180	4	Sheet Metal	63	TEFC	CSCR	FLANGE	220/230	2.5	1425	13	370	300	270	REV	GQ291354/3	8
GF6940	0.5S4HT-FLG	0.5	370	4	Sheet Metal	71	TEFC	CSIR	FLANGE	220/230	4.5	1425	26	300	220	190	REV	GQ291354/11	12
GF6941	1S4HT-FLG	1	750	4	Sheet Metal	80	TEFC	CSCR	FLANGE	220/230	6	1425	51	300	230	210	REV	GQ291354/1	16.5
GF6942	3S4HT-FLG	3	2250	4	Sheet Metal	100S	TEFC	CSCR	FLANGE	220/230	13.5	1440	153	210	200	150	REV	GQ291368/4	28
GF6956	2S4HT-FLG	2	1500	4	Sheet Metal	100S	TEFC	CSCR	FLANGE	190/240	9.5	1440	101	230	250	160	REV	GQ291356/2	24
GF6959	2S2HT-NV1	2	1500	2	Sheet Metal	B56	TEFC	CSCR	FOOT + FLANGE	220/230	9	2800	51	200	200	150	REV	GQ291354/3	22
GF6963	3S4HT-WCI	3	2250	4	Sheet Metal	100S	TEFC	CSCR	FOOT	210	15	1440	153	210	200	150	REV	GQ291343/5	28
GF6964	0.33S4LD	0.33	250	4	Sheet Metal	B56	DP	PSC	FOOT	230	1.7	1425	17	70	220	NA	REV	GQ291615/2	8
GF6970	2S2HT-NV2	2	1500	2	Sheet Metal	B56	TEFC	CSCR	FOOT+FACE	220/230	9	2800	51	200	200	150	REV	GQ291355/2	15.5
GF6987	2S4HT-C	2	1500	4	Sheet Metal	100S	TEFC	CSCR	FOOT	190/240	10.5	1440	101	240	220	150	REV	GQ291307/104	24
GF6988	3S4HT-C	3	2250	4	Sheet Metal	100S	TEFC	CSCR	FOOT	220/230	13.5	1440	153	210	200	150	REV	GQ291307/106	28
GF6989	2S4HT-WC	2	1500	4	Sheet Metal	100S	TEFC	CSCR	FOOT	190/230	11.5	1440	101	240	250	170	REV	GQ291308/104	24
GF6990	3S4HT-WC	3	2250	4	Sheet Metal	100S	TEFC	CSCR	FOOT	210	15	1440	153	210	200	150	REV	GQ291308/106	28
GF7001	1CAH	1	750	4	CI	ND60	TEFC	CSCR	FOOT	220-230	5	1425	51	200	170	120	REV	GQ291353/4	18
GF7003	3CAH	3	2250	4	CI	112M	TEFC	CSCR	FOOT	190/240	17	1440	153	220	230	160	REV	GQ291353/2	43
GF7004	4CAH	4	3000	4	CI	112M	TEFC	CSCR	FOOT	190/240	22	1440	203	200	170	120	REV	GQ291353/2	45

Note : Since our motors are subjected to continuous improvements, the performance/dimensions of the motors may vary from the details indicate in the table above

Code	CAT REF	HP	Watts	Pole	Body Type	Frame	Enclosure	Type
GF1005	3C4H	5	3750	4	CI	132M	TEFC	CSCR
GF1010	2C4M	2	1500	4	CI	ND100L	TEFC	CSCR
GF1017	2C4ME	2	1500	4	CI	ND100L	TEFC	CSCR
GF1019	1.5C4ME	1.5	1100	4	CI	100L	TEFC	CSCR
GF1020	1C4M-FLG	1	750	4	CI	ND80	TEFC	CSCR
GF1038	0.5C4HE	0.5	370	4	CI	ND90	TEFC	CSCR
GF1039	1C4HE	1	750	4	CI	ND90	TEFC	CSCR
GF1041	3C4HE	3	2250	4	CI	112	TEFC	CSCR
GF1042	1.5C4H	1.5	1100	4	CI	ND100L	TEFC	CSCR
GF1048	3C4H-FLG	3	2250	4	CI	112M	TEFC	CSCR
GF1058	1C4H	1	750	4	CI	ND90	TEFC	CSCR
GF1059	2C4M-FLG	2	1500	4	CI	ND100L	TEFC	CSCR
GF1065	2C4H	2	1500	4	CI	ND100L	TEFC	CSCR
GF1076	7.5C4H	7.5	5500	4	Cast Iron	169M	TEFC	CSCR
GF1079	5C6H	5	3750	6	Cast Iron	130M	TEFC	CSCR
GF1210	0.75A4M-FLG	0.75	550	4	Aluminium	80	TEFC	CSCR
GF212	0.25A2L-FLG	0.25	180	2	Aluminium	63	TEFC	PSC
GF214	0.5A2L-FLG	0.5	375	2	Aluminium	71	TEFC	PSC
GF216	1A2L-FLG	1	750	2	Aluminium	80	TEFC	PSC
GF218	2A2L-FLG	2	1500	2	Aluminium	90L	TEFC	PSC
GF220	0.25A4L-FLG	0.25	180	4	Aluminium	71	TEFC	PSC
GF221	0.5A4L-FLG80	0.5	370	4	Aluminium	80	TEFC	PSC
GF223	0.75A4L-FLG	0.75	550	4	Aluminium	80	TEFC	PSC
GF225	1A4L-FLG	1	750	4	Aluminium	80	TEFC	PSC
GF235	3A2M	3	2250	2	Aluminium	90	TEFC	CSCR
GF237	0.33A4M	0.33	250	4	Aluminium	71	TEFC	CSCR
GF238	0.33A4L	0.33	250	4	Aluminium	71	TEFC	PSC
GF239	0.5A4M	0.5	375	4	Aluminium	71	TEFC	CSCR
GF240	0.75A4M	0.75	550	4	Aluminium	80	TEFC	CSCR
GF241	0.75A4L	0.75	550	4	Aluminium	80	TEFC	PSC
GF242	1.5A4M	1.5	1100	4	Aluminium	90S	TEFC	CSCR
GF243	1.5A4L	1.5	1100	4	Aluminium	90S	TEFC	PSC
GF244	2A4L	2	1500	4	Aluminium	90L	TEFC	CSCR
GF245	2A4M	2	1500	4	Aluminium	90L	TEFC	CSCR
GF246	3A4L	3	2250	4	Aluminium	100L	TEFC	PSC
GF247	3A4M	3	2250	4	Aluminium	100L	TEFC	CSCR
GF248	0.25A2L	0.25	187	2	Aluminium	63	TEFC	PSC
GF249	0.5A2L	0.5	375	2	Aluminium	63	TEFC	PSC
GF250	0.5A2M	0.5	375	2	Aluminium	71	TEFC	CSCR
GF252	0.75A2M	0.75	550	2	Aluminium	71	TEFC	CSCR
GF254	1A2L	1	750	2	Aluminium	80	TEFC	PSC
GF255	1A2M	1	750	2	Aluminium	80	TEFC	CSCR
GF256	1.5A2L	1.5	1100	2	Aluminium	80	TEFC	PSC
GF257	1.5A2M	1.5	1100	2	Aluminium	80	TEFC	CSCR
GF258	2A2L	2	1500	2	Aluminium	90	TEFC	PSC
GF259	2A2M	2	1500	2	Aluminium	90L	TEFC	CSCR
GF260	3A2L	3	2250	2	Aluminium	90L	TEFC	PSC
GF262	0.5A4M-FLG	0.5	375	4	Aluminium	71	TEFC	CSCR
GF263	2A4M-FLG	2	1500	4	Aluminium	90L	TEFC	CSCR
GF264	3A4M-FLG	3	2250	4	Aluminium	100	TEFC	CSCR
GF410	165EA-3	0.14	107	4	Sheet Metal	127DIA	TE	PSC
GF411	12COZE-LUG	0.03	25	2	Sheet Metal	55DIA	TE	PSC
GF7501	0.25A4L	0.25	180	4	Aluminium	63	TEFC	PSC
GF7502	0.5A4L	0.5	375	4	Aluminium	71	TEFC	PSC
GF7503	1A4L	1	750	4	Aluminium	80	TEFC	PSC
GF7504	1A4M	1	750	4	Aluminium	80	TEFC	CSCR
GF7506	1A4M-FLG	1	750	4	Aluminium	80	TEFC	CSCR
GF7512	0.5A4M-FLG80	0.5	370	4	Aluminium	80	TEFC	CSCR
GF7519	0.5A4L-FLG	0.5	375	4	Aluminium	71	TEFC	PSC
GF7525	0.15A4L-FLG	0.16	120	4	Aluminium	63	TEFC	PSC
GF7526	0.25A4M-FLG	0.25	180	4	Aluminium	71	TEFC	CSCR
GF804	3S4MDE-TP+FLG	3	2250	4	Sheet Metal	100L	DPFC	THREE PHASE

Note : Since our motors are subjected to continuous improvements, the performance/dimensions of the motors may vary from the details indicate in the table above

Mounting	Rated Voltage (Volts)	Rated Current (Amp.)	Rated Speed (RPM)	Rated Torque Kg-Cm	STT (%FLT)	BOT (%FLT)	RUT (%FLT)	DOR	Dimension drawing no.	Net Wt Kg
FOOT	190/240	22	1440	250	300	320	120	REV	GQ2913531	76
FOOT	220/230	12	1425	102	220	200	150	REV	GQ2913533	33
FOOT	190/240	9.5	1425	103	260	230	200	REV	GQ2913441	33
FOOT	220/230	7.2	1425	75	250	250	160	REV	GQ2913441	26
FLANGE	220-230	5	1425	51	200	170	130	REV	GQ2913523	18
FOOT	190/240	2.5	1425	25	360	220	200	REV	GQ2913443	14
FOOT	190/240	5	1425	51	290	230	220	REV	GQ2913442	16
FOOT	190/240	15	1440	153	220	230	160	REV	GQ2913445	43
FOOT	190-240	8.2	1425	75	260	260	160	REV	GQ2913533	33
FLANGE	190/240	17	1440	153	210	230	160	REV	GQ2913522	44
FOOT	190/240	5	1425	51	300	230	220	REV	GQ2913442	20.1
FLANGE	220/230	12	1425	102	220	200	150	REV	GQ2913521	33
FOOT	190/240	9.5	1425	102	260	250	150	REV	GQ2913441	33
FOOT	190/240	33.5	1440	1	200	250	150	REV	GQ291339	105
FOOT	190/240	25	950	200	220	220	110	REV	GQ291104	76
FLANGE	230	5.3	1425	38	220	310	170	REV	GQ2913483	14
FLANGE	230	1.7	2800	6	30	200	NA	REV	GQ2913481	5
FLANGE	230	2.5	2800	13	30	190	NA	REV	GQ2913482	9
FLANGE	230	5	2800	26	50	200	NA	REV	GQ2913483	15
FLANGE	230	9	2800	51	30	200	NA	REV	GQ2913484	18
FLANGE	230	1.9	1425	13	70	240	NA	REV	GQ2913482	8
FLANGE	230	3	1425	25	50	220	NA	REV	GQ2913483	14
FLANGE	230	3.8	1425	38	30	260	NA	REV	GQ2913483	14
FLANGE	230	4.5	1425	51	40	200	NA	REV	GQ2913483	15
FOOT	220	15	2800	77	160	200	150	REV	GQ291310	19.5
FOOT	230	1.9	1425	17	200	260	170	REV	GQ2912722	8
FOOT	230	1.8	1400	17	50	200	NA	REV	GQ2912722	8
FOOT	230	3	1400	26	230	200	170	CWIDE	GQ291802	8
FOOT	230	3.2	1425	38	230	200	170	CWIDE	GQ2912724	14
FOOT	230	3.2	1425	38	30	200	NA	REV	GQ2912724	12
FOOT	230	6	1425	75	220	230	150	REV	GQ2912726	18
FOOT	230	6	1425	75	40	230	NA	REV	GQ2912726	18
FOOT	230	9	1425	102	250	210	150	REV	GQ2912726	20
FOOT	230	9	1425	102	220	200	150	CWIDE	GQ2912726	20
FOOT	230	12	1425	153	30	210	NA	REV	GQ291296	30
FOOT	230	13	1425	153	220	210	150	REV	GQ291296	31
FOOT	230	1.6	2800	12	60	170	NA	REV	GQ2912721	6
FOOT	230	1.3	2800	6	50	230	NA	REV	GQ291801	6
FOOT	230	2.5	2750	13	200	200	170	CWIDE	GQ2912721	8
FOOT	230	3.5	2800	19	220	210	170	REV	GQ2912723	8
FOOT	230	4.9	2800	25	50	280	NA	REV	GQ2912724	13
FOOT	230	4.4	2800	25	280	270	190	CWIDE	GQ2912724	14
FOOT	230	6	2800	38	40	210	NA	REV	GQ2912724	14
FOOT	230	60	2800	38	260	210	150	REV	GQ2912724	14
FOOT	230	9	2800	51	30	200	NA	REV	GQ2912726	18
FOOT	230	9	2800	51	270	180	150	CWIDE	GQ2912726	20
FOOT	230	12.5	2800	77	30	210	NA	REV	GQ2912727	20
FLANGE	230	2.7	1400	26	230	200	150	REV	GQ291932	9
FLANGE	230	9	1425	102	250	210	150	REV	GQ291934	18
FLANGE	230	13	1425	153	220	210	150	REV	GQ291934	30
PAC	230	11	1400	8	55	190	NA	CWIDE	GQ291140	4
LUG	230	0.5	2250	1	90	250	NA	CWIDE	GQ291321	4.5
FOOT	230	1.5	1425	12	60	180	NA	REV	GQ291801	5.2
FOOT	230	2.7	1425	25	40	190	NA	REV	GQ291802	8
FOOT	230	4.5	1425	51	30	200	NA	REV	GQ291803	14.4
FOOT	230	4.8	1425	51	210	200	150	REV	GQ291804	14.4
FLANGE	230	4.8	1425	51	220	200	150	REV	GQ2913483	16.5
FLANGE	230	4.5	1425	25	240	220	160	REV	GQ291933	14
FLANGE	230	2.3	1425	25	50	180	NA	REV	GQ291932	8
FLANGE	230	1.4	1425	12	60	180	NA	REV	GQ291931	5
FLANGE	230	2.5	1425	13	260	190	150	REV	GQ291932	8
FLANGE	415/240	4.6/8.0	1440	153	250	330	250	REV	GQ291276	28

CERTIFICATIONS AND APPROVALS

We at FHP Motors division, continuously upgrade our Products, Processes and Facilities to meet requirements of various National and International Standards. Our team is committed to meet & exceed customer expectations.

We obtain the product and process approvals as per Customer's requirements.

List of current Certifications/Approvals/Accreditations is as under:

Certification	Scope	Plant / Product Range
IS 9001:2008	Management System	Complete Facility
ISO14001:2004	Environmental Management Systems	Complete Facility
ISO 18001:2007	OSHAS	Complete Facility
ISI Mark (IS996:2009)	Single Phase Motors	0.25, 1, 2, 3 HP, 4 P
IS/IEC 60079 Part 0 & 1	Flameproof Motors	0.5 to 1HP, 4P
ATEX (EN 60079 Part 0 & 1)	Flameproof Motors	0.5 to 1HP, 4P
CE	Single Phase Motors	20W to 3.7KW
CSA 22.2 No 100-14	Single Phase Motors	0.25 to 5HP



* Different colour options can be offered on request.
80

PRODUCT NOMENCLATURE

Nomenclature for FHP Motors			Nomenclature for AHU Motors		
Digit	Denotes	Details	Digit	Denotes	Details
1	HP	0.25 for 1/4 HP, 0.5 for 0.5 hp, 1 for 1 hp & 5 for 5 hp.	1	Sweep	Motor suitable for Blade size.
2	Body	S: Sheet metal, C: CI Body, A: Aluminium body, O for open construction, F for Flame proof.	2	Duty	EX for Exhaust duty, SE for Semi Exhaust / Climatizer duty and CO for cooler duty. Cooler duty is comparatively flat blades.
3	Polarity	2, 4, 6 & 8	3	Polarity	2, 4, 6 & 8
4	Duty	L for Light duty, M for Standard duty, H for heavy & X for Not applicable. If further variant required than L1, L2 and M1, H1.	4	Al/Cu Wire	*Optional -E for Aluminium wire denotes Economy model. NIL for Copper wire.
5	Enclosure	*Optional -T: TEFC, O: DP, S: Special-Applicable for Sheet metal & Open type construction only. Not applicable for CI & Aluminium body construction as that are TEFC by default.	5		Distinguishes basic features & special features in motor.
6	Al/Cu Wire	*Optional -E for Aluminium wire denotes Economy model. Copper wire-NIL.	6	No of Speed	*Optional -All for single speed, 3 for 3 speed.
7		Distinguishes basic features & special features in motor.	7	Special features	*Optional -Special features: STJD for stand mounted. Please refer Application column of pricelist for details.
8	Special features	*Optional -Special features: FLG for IEC Flange, NFLG for non std flange, FDF for foot cum flange. Please refer Application column of pricelist for details.			



